

New York State Office for People with Developmental  
Disabilities

## **Family Support Services Grant Programs**

Respite, Family Training, Advocacy, Counseling & Support Services,  
Crisis Intervention, Voucher Reimbursement, Senior Day Programs,  
Recreation, Non-Medicaid Service Coordination

Long Island Developmental Disabilities Service Office  
415A Oser Avenue  
Hauppauge, NY 11788  
(631) 434-6000  
<http://www.opwdd.ny.gov>

The grant list is available on line at [www.lifssac.com](http://www.lifssac.com)

Revised: February 2017

# TABLE OF CONTENTS

<b><u>CATEGORY</u></b>	<b><u>PG. NUMBERS</u></b>
<b>Introduction</b>	<b>1</b>
<b>After School/Respite Programs</b>	<b>2-5</b>
<b>School Vacation Respite</b>	<b>6-8</b>
<b>Crisis Intervention</b>	<b>9-11</b>
<b>Family Counseling, Training &amp; Advocacy</b>	<b>12-14</b>
<b>Parent Training for D.D. Parents</b>	<b>15</b>
<b>In-Home Respite</b>	<b>16-17</b>
<b>Overnight Freestanding Respite</b>	<b>18-19</b>
<b>Weekend &amp; Recreation Respite</b>	<b>20-27</b>
<b>Sibling Support</b>	<b>28</b>
<b>Town Recreation</b>	<b>29-30</b>
<b>Voucher Reimbursement</b>	<b>31-32</b>
<b>Non-Medicaid Service Coordination</b>	<b>33-35</b>



# **INTRODUCTION**

This is a comprehensive listing of all Family Support Grants in Nassau and Suffolk Counties. Services are funded by the New York State Office for People with Developmental Disabilities (OPWDD) through the local Long Island Developmental Disabilities Services Office (L.I.D.D.S.O.). The programs help developmentally disabled Long Islanders and their families.

Developmental Disabilities include mental retardation, neurological impairment, epilepsy, cerebral palsy and autism. Participating individuals must meet the OPWDD eligibility criteria. Eligibility information is available on the OPWDD website under General Information & Publications/Forms.

## **THE FOLLOWING IS A BRIEF DESCRIPTION OF THE SERVICES THAT ARE PROVIDED:**

**After School/Respite Program & School Vacation Respite:** Provides services to developmentally disabled children or adults for several hours up to 5 days a week.

**Crisis Intervention:** Services include behavioral assessment and intervention; training of families; linkage and referral; emergency in-home and out-of-home respite.

**Parent Training for DD Parents:** Provides parent skills and training for parents with developmental disabilities.

**Family Counseling, Training & Advocacy:** Provides counseling, training, behavior management and advocacy services for the family and the developmentally disabled person, at the agency site or in the home.

**In-Home Respite:** Matches trained respite workers with families to provide scheduled care for individuals with developmental disabilities in their homes.

**Overnight Freestanding Respite:** Scheduled respite in certified agency operated respite homes, weekends or weekdays.

**Respite Recreation:** Provides care through recreation and social activities at various agencies in Nassau and Suffolk Counties.

**Senior Day Programs:** Social recreational day programs offered to seniors 45 years and up.

**Sibling Support:** Provides services to siblings through support groups, individual counseling or recreational activities.

**Town Recreation:** Provides recreation and social activities to town residents with developmental disabilities.

**Voucher/Reimbursement:** Families are reimbursed for purchased goods or services for their developmentally disabled person which cannot be funded through other resources. Services in the grant are not reimbursable.

**Non-Medicaid Service Coordination:** Short term service coordination to assist developmentally disabled individuals with the planning for and accessing of desired services and supports.



## AFTER SCHOOL RESPITE PROGRAMS

AGENCY	LOCATION	SERVICE HOURS	POPULATION SERVED	FEE	COMMENTS	CONTACT PERSON
A-1 Universal Care, Inc.	Park Avenue School 100 E Park Avenue Westbury	Tuesdays, Wednesdays, & Fridays 3pm-6pm	Ages: 5-22 years Developmentally Disabled	No Fee	Nassau County	Donna Harris (516) 338-8777 x12 <a href="mailto:dwalker@a1universalcare.org">dwalker@a1universalcare.org</a>
Association for Children with Down Syndrome (ACDS)	4 Fern Place Plainview	Wednesdays 4:30pm-7pm	Ages: 5 years & up Down Syndrome & Developmentally Disabled	No Fee	Nassau & Suffolk Counties Dance Class – Ballet, tap, jazz and modern techniques	Erica Lepurage (516) 605-2391 <a href="mailto:elepuration@acds.org">elepuration@acds.org</a>  Brian Laubis (516) 605-2391
Association for Children with Down Syndrome (ACDS)	4 Fern Place Plainview	Thursdays 5:30pm - 8:30pm	Ages: 15 years & up Down Syndrome & Developmentally Disabled Teen program	Fee	Nassau & Suffolk Counties Mix of sessions in the community and at ACDS.	Erica Lepurage (516) 605-2391 <a href="mailto:elepuration@acds.org">elepuration@acds.org</a>  Brian Laubis (516) 605-2391
Association for Children with Down Syndrome (ACDS)	4 Fern Place Plainview	Mondays 5:30-8pm Fall & Spring	Ages: 11-15 years Developmentally Disabled children	No Fee	Nassau & Suffolk Counties The tween socialization program offers age appropriate activities in ACDS teen lounge, gym and Karaoke Café.	Erica Lepurage (516) 605-2391 <a href="mailto:elepuration@acds.org">elepuration@acds.org</a>  Brian Laubis (516) 605-2391



# AFTER SCHOOL RESPITE PROGRAMS

AGENCY	LOCATION	SERVICE HOURS	POPULATION SERVED	FEE	COMMENTS	CONTACT PERSON
Adults & Children with Learning Disabilities (ACLD)	Bethpage Day Service Center 807 S. Oyster Bay Bethpage Respite	Thursdays & Fridays 3:30 – 7:30pm Saturdays & Sundays 10am-4:15pm	Ages: 21 years & up Developmentally Disabled	No Fee	Nassau & Suffolk Counties	Stellie Louis (631) 822-0028 x.358 <a href="mailto:louiss@acld.org">louiss@acld.org</a>
Adults & Children with Learning Disabilities (ACLD)	67 Greenwood Road Or 200 West Main Street Bay Shore	Mon.-Fri. 2:30 pm – 5:45 pm	Ages: 5–21 years Developmentally Disabled	Coordinated through school district	Nassau & Suffolk Counties Transportation via school district Therapeutic Recreation	Linda Eisen (631) 647-9577 x350 <a href="mailto:eisenl@acld.org">eisenl@acld.org</a>
Bellport Area Community Action Committee, Inc. (BACAC)	Frank P. Long School Brookhaven Ave. Bellport	Mon.-Fri. 3pm-6pm	Ages: 5-12 years Developmentally Disabled	No Fee	South Country School District Only	Yolanda Lucas (631) 665-1900 x350
Developmental Disabilities Institute (DDI)	75 Landing Meadow Road Smithtown	Monday, Wednesday & Friday 4pm – 7pm	Ages: 18 years & up Developmentally Disabled	No Fee	Must provide own transportation. Must be waiver enrolled.	Arilys Fils-Aime (631) 870-6026
East End Disability Associates, Inc. (EEDA)	West Hampton Beach BOCES 215 Old Riverhead Rd West Hampton	Mon.-Fri. 2:30pm-5:30pm	Ages: 5-21 years Developmentally Disabled	No Fee	Suffolk County - East of William Floyd Parkway Transportation via school district Therapeutic Recreation	Shoshannah Jacobs (631) 369-7345 x.207 <a href="mailto:shoshannahj@eed-a.org">shoshannahj@eed-a.org</a>
East End Special Players	Bridge Hampton Senior Center 585 Sag Harbor Turnpike Bridge Hampton	Thursdays 4pm – 7:30pm	Adults Developmentally Disabled	No Fee	Explore different arts such as sculpture, painting, dance and cooking. No transportation. Not Bilingual. Wheelchair Assessable	Paul Rogers 631-726-447 Jacqui Leader 631-678-75760
Economic Opportunity Council (EOC)	320 Carlton Avenue Suite 7800 Central Islip	Mondays 2-6pm	Ages: 21 years & up Developmentally Disabled	No Fee	Suffolk Counties Transportation provided	Simone Holder (631) 666-6471 x.602 <a href="mailto:sholder@eoc-suffolk.com">sholder@eoc-suffolk.com</a>



# AFTER SCHOOL RESPITE PROGRAMS

AGENCY	LOCATION	SERVICE HOURS	POPULATION SERVED	FEE	COMMENTS	CONTACT PERSON
Family Counseling Services	West Hampton Beach	Social Skills Fall/Winter Mon 6-7pm Recreations/Respite 2 Sun per month 10:30 – 12pm	Ages: 5-15 years Autism Spectrum Disorders	Sliding Scale	Education, advocacy, resource & referral, counseling & parent support	Barbara Silverstein (631) 288-1954 x. 233 <a href="mailto:bsilverstein@fsl-li.org">bsilverstein@fsl-li.org</a>
Family Residences & Essential Enterprises, Inc. (FREE)	28 Research Way East Setauket	Mon.-Fri. Afternoons 2:00pm – 5pm	Ages: 12 years & up Developmentally Disabled	No Fee	Suffolk County Only Transportation on limited basis	Amanda Baker (631) 689-2525 x.2544 <a href="mailto:abaker@familyres.org">abaker@familyres.org</a>
Family Residences & Essential Enterprises, Inc. (FREE)	120 Plant Avenue Hauppauge	Mon.-Fri. Afternoons 2:00pm – 5pm	Ages: 12 years & up Developmentally Disabled	No Fee	Suffolk County Only Transportation on limited basis	Amanda Baker (631) 689-2525 x.2544 <a href="mailto:abaker@familyres.org">abaker@familyres.org</a>
Friedberg Jewish Community Center	15 Neil Court Oceanside	After School Weekdays 3pm – 6pm & Sundays	Teens on the Autism Spectrum, or with other Developmental Disabilities	No Fee	After school enrichment clubs, Sunday social clubs, life-skills workshop Vacation Respite	Marcy Hallerman (516) 634-4173 <a href="mailto:mhallerman@friedbergicc.org">mhallerman@friedbergicc.org</a>
Eden II/Genesis	270 Washington Ave. Plainview	Mondays & Thursdays 3pm-5pm	Ages: 5-21 years Autism	\$15 per day	Nassau & Suffolk Counties	Jillian Panni 516-937-1397 x.511 <a href="mailto:jpanni@eden2.org">jpanni@eden2.org</a>
Little Flower Children & Family Services	2450 N. Wading River Road Wading River	Day & Evening	Ages: 4 to 14 years Developmentally Disabled	Sliding Scale	Nassau & Suffolk Counties	Judy Feller (631) 929-6200 x.1546 <a href="mailto:fellerj@lfchild.org">fellerj@lfchild.org</a>
Mill Neck Services	501 S. Broadway Hicksville	Thursdays 6-8:30pm	Deaf & Developmentally Disabled	No Fee	Nassau & Suffolk Counties	Loretta Murray (516) 922-3818 <a href="mailto:deafesq@millneck.org">deafesq@millneck.org</a>



# AFTER SCHOOL RESPITE PROGRAMS

AGENCY	LOCATION	SERVICE HOURS	POPULATION SERVED	FEE	COMMENTS	CONTACT PERSON
SCO Family of Services Drop-in-Lounge	117 Comac Road Ronkonkoma	Thursdays 6-9 pm	Ages: 21 years & up Developmentally Disabled adults living at home	\$2 per week	Nassau & Suffolk Counties Closed on legal holidays Wheelchair accessible	Peggy Telesca (631) 273-2773 x.203 <a href="mailto:ptelesca@sco.org">ptelesca@sco.org</a> Donna Delarosa (631) 273-2773 x.235 <a href="mailto:ddelarosa@sco.org">ddelarosa@sco.org</a>
Sid Jacobson Jewish Community Center	300 Forest Drive East Hills	Mon. - Fri. 3:15pm-5:15pm	Ages: 5-21 years Developmentally Disabled and Autistic Children	No Fee	Nassau & Suffolk Counties Closed on school holidays & vacations. Follows Roslyn school calendar Wheelchair Accessible	Stacy Denison (516) 484-1545 x178 <a href="mailto:sdenison@sjjcc.org">sdenison@sjjcc.org</a>
United Cerebral Palsy Association of Greater Suffolk County (UCP of Suffolk)	250 Marcus Blvd. Hauppauge	Mondays & Wednesdays 3:30pm-6:00pm	Developmentally Disabled Adults	No Fee	Suffolk County Only Adapted Creative Arts	Monica Kuzdro (631) 232-0011 x. 608 <a href="mailto:mkuzdro@ucp-suffolk.org">mkuzdro@ucp-suffolk.org</a>
United Cerebral Palsy Association of Greater Suffolk County (UCP of Suffolk)	250 Marcus Blvd. Hauppauge	3:00pm-6pm two days a week	Developmentally Disabled 18+	No Fee	Suffolk County Only Athletic Program Sometimes school transportation to program available	Monica Kuzdro (631) 232-0011 x. 608 <a href="mailto:mkuzdro@ucp-suffolk.org">mkuzdro@ucp-suffolk.org</a>
YAI -National Institute for People w/Disabilities (YAI/NIPD)	555 Washington Ave. Brentwood	Mon-Fri. 2:30pm-5:30 pm	Ages: 13-21 years Developmentally Disabled	Donation Requested	Nassau & Suffolk Counties No transportation. This program provides supervision and appropriate leisure and recreational activities	Colleen Ryan (631) 858-9377 x311 (631) 967-7121 <a href="mailto:colleen.ryan@yai.org">colleen.ryan@yai.org</a>
YAI -National Institute for People w/Disabilities (YAI/NIPD)	555 Washington Ave. Brentwood	Tuesdays & Fridays 5:30pm – 9:30pm  1-2 Saturdays per year 10am – 5pm	Adults Autism Spectrum and/or Mild Developmental Disability	No Fee	Serves Nassau & Suffolk Counties Wheelchair Accessible Capable of participating in activities with a one to five staff	Colleen Ryan (631) 967-7121 <a href="mailto:colleen.ryan@yai.org">colleen.ryan@yai.org</a> Pamela Wolff <a href="mailto:pamela.wolff@yai.org">pamela.wolff@yai.org</a> (631)423-0460



# SCHOOL VACATION RESPITE

AGENCY	LOCATION	SERVICE HOURS	POPULATION SERVED	FEE	COMMENTS	CONTACT PERSON
Association for Children with Down Syndrome (ACDS)	4 Fern Place Plainview	February, Spring and Christmas Breaks	Ages: 5-15 years Down Syndrome and other Developmental Disabilities	Minimal Fee	Nassau & Suffolk Counties No transportation provided	Brian Laubis (516) 605-2391
Adults & Children w/Learning & Developmental Disabilities (ACLD)	Great South Bay YMCA 200 W. Main St. Bay Shore	Mon.-Fri. 9am-4pm 6 week session – end of June – early August	Ages: 15-17 years Developmentally Disabled	\$300	Nassau & Suffolk Counties Counselor in Training Day Camp experience Parents provide transportation	Linda Eisen (631) 647-9577 x350 <a href="mailto:eisenl@acld.org">eisenl@acld.org</a>
Adults & Children with Learning & Developmental Disabilities (ACLD)	Great South Bay YMCA 200 W. Main Street Bay Shore	Mon.-Fri 9am-4pm 3 week session June/July or July/August	Ages: 5-12 years Developmentally Disabled	\$150	Nassau & Suffolk Counties Summer Day Camp experience. Parents Provide transportation	Linda Eisen (631) 647-9577 x350 <a href="mailto:eisenl@acld.org">eisenl@acld.org</a>
Adults & Children with Learning & Developmental Disabilities (ACLD)	Great South Bay YMCA 200 W. Main St. Bay Shore	School Vacations Select Days 9am – 4pm	Ages 5-12 years Developmentally Disabled Children	\$60	Nassau & Suffolk Counties Day Camp Experience Parents provide transportation	Linda Eisen (631) 647-9577 x350 <a href="mailto:eisenl@acld.org">eisenl@acld.org</a>
Adults & Children with Learning & Development Disabilities (ACLD)	Y-JCC Hauppauge Rd. Commack	Feb/Apr School Vacation 9am-3pm Select Days	Ages 5-12 years Developmentally Disabled Children	\$60	Nassau & Suffolk Counties Day Camp Experience Parents provide transportation	Linda Eisen (631) 647-9577 x350 <a href="mailto:eisenl@acld.org">eisenl@acld.org</a>
Bais Ezra	129 Elmwood Ave Brooklyn	Mon.-Thus. 10am -3:30pm Friday – 10am – 1:30pm	Ages: 5-21 years Developmentally Disabled & Autistic	\$400	Nassau County Includes transportation Programs runs for 8 days at the end of August in Catskills	Ilana Katz (718) 686-3489 <a href="mailto:ilana_katz@ohelfamily.org">ilana_katz@ohelfamily.org</a>





# SCHOOL VACATION RESPITE

AGENCY	LOCATION	SERVICE HOURS	POPULATION SERVED	FEE	COMMENTS	CONTACT PERSON
Brookville Center for Children's Services	189 Wheatley Rd. Brookville	Christmas/winter break, Easter/Passover break, & 1 week in August 10am-3pm	Ages: 3-21 years Developmentally Disabled children	\$200 per session	Nassau & Suffolk Counties Respite during school holidays Wheelchair Accessible	Barbara Huber (516) 626-1000 x.3353 <a href="mailto:bhuber@brookvillecenter.org">bhuber@brookvillecenter.org</a>
Developmental Disabilities Institute (DDI)	90 Air Park Drive Ronkonkoma	Tuesdays & Thursdays 2:30 – 5:30pm School holiday 10am-2pm	Ages: 3 to 7 years	No fee	Nassau & Suffolk Counties Project "SOAR"- No transportation Only able to serve those without Medicaid Reimbursement available	Christine Racca (631) 580-4046 <a href="mailto:cracca@ddiinfo.org">cracca@ddiinfo.org</a> Jennifer Swenning (631) 580-4007
East End Disability Association (EEDA)	Site rotates throughout Eastern Suffolk	Mon.-Fri.	Ages: 5-21 years Developmentally Disabled	Donation of \$10 per day	Program runs during school vacations (except Christmas)	Christine Proietti (631) 369-7345 x.121 <a href="mailto:christineq@eed-a.org">christineq@eed-a.org</a> Shoshannah Jacobs <a href="mailto:shoshannahj@eed-a.org">shoshannahj@eed-a.org</a>
Family Residences & Essential Enterprises, Inc. (FREE)	191 Sweet Hollow Road Old Bethpage	Mon-Fri. 9am-4pm During school vacations breaks; Presidents Week, Spring Break, Winter Break, and 3 weeks during the Summer	Ages: 5-21 years Children with Autism and other Developmental Disabilities	Small activity fee may apply	Nassau & Suffolk Counties Transportation not included from site to site Transportation included for all outings off site Must provide lunch Wheelchair accessible	Caitlin Eamotte (631) 689-2525 x2544 <a href="mailto:ceamotte01@familyres.org">ceamotte01@familyres.org</a>
Eden II/Genesis	270 Washington Ave. Plainview	Mon.-Fri. 9am-3pm Last week of June & August	Ages: 5-21 years Children with Autism	\$40 per day	Nassau & Suffolk Counties Applications available beginning in May	Jillian Panni 516-937-1397 x.511 <a href="mailto:jpanni@eden2.org">jpanni@eden2.org</a>
Eden II/Genesis	270 Washington Ave. Plainview	8 overnight trips per year Fridays – Sundays	Ages: 5 and up Individuals with Autism	\$100	Nassau & Suffolk Counties 5 people per trip Transportation is not included	Jillian Panni 516-937-1397 x.511 <a href="mailto:jpanni@eden2.org">jpanni@eden2.org</a>



# SCHOOL VACATION RESPITE

AGENCY	LOCATION	SERVICE HOURS	POPULATION SERVED	FEE	COMMENTS	CONTACT PERSON
Eden II/Genesis	270 Washington Ave. Plainview	Day Trips All Holiday breaks 9am – 3pm	Ages: 5-21years Individuals with Autism	\$30 per day	Nassau & Suffolk Counties	Jillian Panni 516-937-1397 x.511 <a href="mailto:jpanni@eden2.org">jpanni@eden2.org</a>
Horseability, Inc.	238 Round Swamp Road Melville	Summer Camp 9am – 3:30pm Mon.-Fri. 1 week in August	Ages: 3 years & up Developmentally Disabled	Camp Fee: \$700	Nassau & Suffolk Counties Wheelchair Accessible Scholarship Available	Jamie Thomas Martin (516) 333-6151 x.111 <a href="mailto:jamie@horseability.org">jamie@horseability.org</a>
Mid-Island Y Jewish Community Center	45 Manetto Hill Rd. Plainview	School Vacation Days 10am – 3:30pm	Children, Teens & Young Adults Autism Spectrum Disorder	Sliding Scale	Nassau & Suffolk Counties Program includes arts & crafts, swimming, music, sports, & inclusion opportunities	Sharon Hanover (516) 822-3535 x.332 <a href="mailto:shanover@miyjcc.org">shanover@miyjcc.org</a>
Nassau/Suffolk Services for the Autistic (NSSA)	80 Hauppauge Road Commack	June 27 <sup>th</sup> – July 1 <sup>st</sup> Mon.-Fri. 9:30 – 3:30 pm	Ages: 5-21 years Individuals with Autism	\$125	Nassau & Suffolk Counties Summer Camp Program	Jason Watson (631) 462-0386 x.201 <a href="mailto:tmanziona@nssa.net">tmanziona@nssa.net</a>
Sid Jacobson Jewish Community Center	300 Forrest Drive East Hills	Last week of August 10am – 4pm	Ages:5-22 years Developmentally Disabled	No Fee	Post Summer Camp Program	Stacy Denison (516) 484-1545 x178 <a href="mailto:sdenison@sjjcc.org">sdenison@sjjcc.org</a>
Variety Child Learning Center	47 Humphrey Drive Syosset	10am – 2pm School Vacations	Ages: 3 – 10 years Developmentally Disabled Children with Behavioral Challenges	No Fee	No transportation or Lunch Provided	Rebecca Esquillin (516)921-7171 x. 2104 <a href="mailto:resquillin@vclc.org">resquillin@vclc.org</a>



# CRISIS INTERVENTION

AGENCY	LOCATION	SERVICE HOURS	POPULATION SERVED	FEE	COMMENTS	CONTACT PERSON
Angela's House  NMSC Crisis	P.O. Box 5052 Hauppauge	Monday – Friday 9am – 5pm	Medically Frail, Technology Dependent, Chronically Ill and Developmentally Disabled 18 years or younger	No Fee	Must have OPWDD eligibility. We do not provide the respite ONLY the funding for an emergency situation.	Colleen Kunkel 631-761-0128 <a href="mailto:ckunkel@angelashouse.org">ckunkel@angelashouse.org</a>
Angela's House	P.O. Box 5052 Hauppauge	Individually scheduled	Medically Frail, Technology Dependent, Chronically Ill and Developmentally Disabled 18 years or younger	No Fee	Nassau and Suffolk	Colleen Kunkel 631-761-0128 <a href="mailto:ckunkel@angelashouse.org">ckunkel@angelashouse.org</a>
East End Disability Associates (EEDA)	729A Route 25A Rocky Point NY	24 hours a day 7 days a week	Ages: 7 and up Developmentally Disabled	No Fee	Suffolk County Not wheelchair accessible	Mobile Crisis: Hotline (631) 369-2585 Crisis House: Kim Murphy (631) 849-5582 <a href="mailto:Kimm@eed-a.org">Kimm@eed-a.org</a>
Family Residences & Essential Enterprises, Inc. (FREE)	7 Dogwood Lane Westbury, NY 11590	24 hours a day 7 days a week	Ages: 16 years & up Developmentally Disabled	No Fee	Nassau & Suffolk Counties	Katrina Richardson (631) 273-1300 x.3581 <a href="mailto:krichardson@familyres.org">krichardson@familyres.org</a> Astrido St. Surin x. 3462 <a href="mailto:astsurin@familyres.org">astsurin@familyres.org</a> Nicky Faranda x.3539 <a href="mailto:nfaranda@familyres.org">nfaranda@familyres.org</a> Hotline – (631)476-2068
Family Residences & Essential Enterprises, Inc. (FREE)	25 Wood Road Centereach Crisis House	24 hours a day 7 days a week	Ages: 16 years & up Developmentally Disabled	No Fee	Nassau & Suffolk Counties	Katrina Richardson (631) 273-1300 x.3581 <a href="mailto:krichardson@familyres.org">krichardson@familyres.org</a> Astrido St. Surin x. 3462 <a href="mailto:astsurin@familyres.org">astsurin@familyres.org</a> Nicky Faranda x.3539 <a href="mailto:nfaranda@familyres.org">nfaranda@familyres.org</a> Hotline – (631)476-2068



# CRISIS INTERVENTION

AGENCY	LOCATION	SERVICE HOURS	POPULATION SERVED	FEE	COMMENTS	CONTACT PERSON
Family Residences & Essential Enterprises, Inc. (FREE)	120 Plant Avenue Hauppauge	24 hours a day 7 days a week	Ages: 5 years & up Developmentally Disabled and their families	No Fee	Nassau and Suffolk County area. Mobile Crisis Intervention aims to reduce the intensity of an individual's emotional, mental, physical and behavioral reactions to a crisis; to help individuals return to their level of functioning before the crisis and to assist the family unit to maintain a stable environment within the home.	Katrina Richardson (631) 273-1300 x.3581 <a href="mailto:krichardson@familyres.org">krichardson@familyres.org</a> Astrido St. Surin x. 3462 <a href="mailto:astsurin@familyres.org">astsurin@familyres.org</a> Nicky Faranda x.3539 <a href="mailto:nfaranda@familyres.org">nfaranda@familyres.org</a> Hotline - (631)476-2068
Family Residences & Essential Enterprises, Inc. (FREE)	12 Old East Neck Rd. Melville	24 hours a day 7 days a week	Ages: 16 years & up Developmentally Disabled	No Fee	Nassau & Suffolk Counties Ambulatory	Katrina Richardson (631) 273-1300 x.3581 <a href="mailto:krichardson@familyres.org">krichardson@familyres.org</a> Astrido St. Surin x. 3462 <a href="mailto:astsurin@familyres.org">astsurin@familyres.org</a> Nicky Faranda x.3539 <a href="mailto:nfaranda@familyres.org">nfaranda@familyres.org</a> Hotline - (631)476-2068
Family Residences & Essential Enterprises, Inc. (FREE)	120 Plant Avenue Hauppauge	24 hours a day 7 days a week	Ages: 5 years and up Developmentally Disabled and their families	No Fee	Nassau & Suffolk Counties Crisis intervention aims to reduce the intensity of an individual's emotional, mental, physical and behavioral reactions to a crisis; to help individuals return to their level of functioning before the crisis, and assist the family unit to maintain a stable environment within the home	Katrina Richardson (631) 273-1300 x.3581 <a href="mailto:krichardson@familyres.org">krichardson@familyres.org</a> Astrido St. Surin x. 3462 <a href="mailto:astsurin@familyres.org">astsurin@familyres.org</a> Nicky Faranda x.3539 <a href="mailto:nfaranda@familyres.org">nfaranda@familyres.org</a> Hotline - (631)476-2068  24 hour crisis beeper/hotline: (631)476-2068



# CRISIS INTERVENTION

AGENCY	LOCATION	SERVICE HOURS	POPULATION SERVED	FEE	COMMENTS	CONTACT PERSON
Eden II/Genesis	270 Washington Avenue Plainview	As Needed	Ages: 5-21 years Children with Autism	No Fee	Nassau & Suffolk Counties Crisis respite & behavioral management Parent Training	Jillian Panni 516-937-1397 x.511 <a href="mailto:jpanni@eden2.org">jpanni@eden2.org</a>
Human First, Inc.	128 Atlantic Avenue Lynbrook	365 days a year 4pm – 11pm	Children and Adults with Developmental Disabilities	No Fee	Nassau & Suffolk Counties	Dr. Nicole Apello (347) 831-6989 Sue Sabarra (347) 263-4451 Hotline – (888) 224-7331
Independent Group Home Living, Inc. (IGHL)	356 South Sunrise Service Road Center Moriches	24 hrs a day 7 days a week	Ages: 3 years and up Developmentally Disabled	No Fee	Nassau & Suffolk Counties	Tracey DelDuca (631) 878-0636 <a href="mailto:tdelduca@ighl.org">tdelduca@ighl.org</a> Michelle DiGiantomasso (631) 878-0636
Independence Residences, Inc. (IRI)	93-22 Jamaica Av. 2 <sup>nd</sup> floor Woodhaven	Day-Eve	Ages: 15 years & up Developmentally Disabled, Autistic and those with challenging behaviors	No Fee	Nassau County Only Will provide emergency respite services	Timothy Coleman (718) 805-6796 x.113 (646) 294-0544 <a href="mailto:tcoleman@in-res.org">tcoleman@in-res.org</a> Estefania Tineo (917) 717-1325
Stony Brook Child and Adolescent Outpatient Clinic (formerly Cody Center)	Office and in Home Services Towns of Huntington, Brookhaven, Islip, Babylon, Smithtown	Individually Scheduled	Ages 5-14 years Autism Spectrum Disorder	No Fee for assessment \$25 per week for behavioral intervention & training	Behavioral assessment, intervention, parent training for families of children with Autism who display challenging behaviors at home	Dr. Pail Mitriani (631) 632-9578  Naomi Angoff-Chedd (631) 632-3715



# FAMILY COUNSELING, TRAINING & ADVOCACY

AGENCY	LOCATION	SERVICE HOURS	POPULATION SERVED	FEE	COMMENTS	CONTACT PERSON
Angela's House	P.O. Box 5052 Hauppauge	Day & Evening	Medically frail, chronically ill, technology dependent and developmentally disabled	No Fee	Nassau & Suffolk Counties	Colleen Kunkel 631-761-0128 <a href="mailto:ckunkel@angelashouse.org">ckunkel@angelashouse.org</a>
Center for Rapid Recovery (CRR)	312 Greenwich St. Hempstead	Mon.-Fri. 9am-5pm	Families with Developmentally Disabled children and adults. Multicultural families	No Fee	Nassau & Suffolk Counties Bilingual public awareness information, advocacy, and referral	Doris Yeboah (516) 292-6449 x.121 <a href="mailto:dyeboah@rapidrecovery.org">dyeboah@rapidrecovery.org</a> Andrea Newalis (516) 292-6449 x.106 <a href="mailto:anewalis@rapidrecovery.org">anewalis@rapidrecovery.org</a>
Developmental Disabilities Institute (DDI)	Various Locations	Individually scheduled	Adults & children with developmental disabilities and their families	No Fee	Nassau & Suffolk Counties Program provides short-term behavioral consultation and parent training to families who have children diagnosed with developmental disability that reside at home and exhibit serious challenging behaviors	Carlene Fallica (631) 360-4634 <a href="mailto:c.fallica@ddiinfo.org">c.fallica@ddiinfo.org</a>
Down Syndrome Advocacy Foundation	P.O. Box 12173 Hauppauge	As needed	Family members of individuals with Down Syndrome and other Developmental Disabilities	No Fee	Nassau & Suffolk Counties Parent training and workshop Yearly conference on Best Practices in the education of children with Down Syndrome Limited Scholarships available to parents of children with Down Syndrome	Susan Antonio (516) 983-7008
East End Disability Associates (EEDA)	Location varies by service	As scheduled	Intellectually disabled adults and family	No Fee	East Suffolk Long Island East of William Floyd Parkway	Joy O'Shaughnessy (631) 369-7345 x208



# FAMILY COUNSELING, TRAINING & ADVOCACY

AGENCY	LOCATION	SERVICE HOURS	POPULATION SERVED	FEE	COMMENTS	CONTACT PERSON
Family Residences & Essential Enterprises, Inc. (FREE)	191 Sweet Hollow Rd. Old Bethpage	Day & Evening	All Ages Prader-Willi Syndrome	No Fee	Nassau & Suffolk Counties In home intervention, parent & family counseling and training	Astrido St. Surin (631) 273-1300 x 3520 <a href="mailto:astsurin@familyres.org">astsurin@familyres.org</a> Katrina Richardson (631) 273-1300 Nicky Faranda x.3539 <a href="mailto:nfaranda@familyres.org">nfaranda@familyres.org</a>
Head Injury Association, Inc. (HIA)	300 Kennedy Drive Hauppauge	Mon.-Fri. 9am-5pm	Families & survivors w/ head injuries	No Fee	Nassau and Suffolk Counties Info. & referral regarding all aspects of traumatic brain injury and services offered through OPWDD. Periodic group training/informal sessions offered	Kristie Marcus (631) 543-7485 <a href="mailto:kmarcus@headinjuryassoc.org">kmarcus@headinjuryassoc.org</a>
Long Island Advocacy Center	999 Herricks Road, Rm 108 New Hyde Park	Monday – Friday 9am – 5pm	17 years & up Developmentally Disabled and their families	No Fee	Nassau & Suffolk Counties Benefits advisement & supports for OPWDD eligibility.	Barbara Morell 516-248-2222 x22 <a href="mailto:bmorell@theliac.org">bmorell@theliac.org</a>
North Shore Child & Family Guidance Center	480 Old Westbury Road Roslyn Heights	Mon.-Fri. 9am-5pm Some evenings	Developmentally Disabled children & their families, parent, & siblings support groups	No Fee for support groups	Also offers grandparent support group	Elizabeth Goulding Tag (516) 802-4018
Parent to Parent of NYS, Inc	415A Oser Avenue Hauppauge	Mon.-Fri. 9am- 5pm	All ages All disabilities	No Fee	We provide 1:1 parent support and assistance in accessing services, parent matching, educational advocacy, workshops and trainings, e-groups and a comprehensive website with online families	Valerie Colavecchio-Reid <a href="mailto:vreid@ptopnys.org">vreid@ptopnys.org</a> Alissa Morris <a href="mailto:amorris@ptopnys.org">amorris@ptopnys.org</a> (631) 434-6196 1-800-559-1729



# FAMILY COUNSELING, TRAINING & ADVOCACY

AGENCY	LOCATION	SERVICE HOURS	POPULATION SERVED	FEE	COMMENTS	CONTACT PERSON
New Horizons Counseling Center	50 West Hawthorne Valley Stream	Mon.-Fri. 9am-5pm Some evenings	Developmentally Disabled individuals and their families Parent & sibling support groups	Sliding Scale for Individual Counseling No fee for	Nassau & Suffolk Counties Individual & family counseling & family support. Sibling support groups, linkage & referral	Peggy Grosman (516) 569-6600 <a href="mailto:pgrosman@nhcc.org">pgrosman@nhcc.org</a>





## PARENT TRAINING FOR DEVELOPMENTALLY DISABLED PARENTS

Page 15

AGENCY	LOCATION	SERVICE HOURS	POPULATION SERVED	FEE	COMMENTS	CONTACT PERSON
Long Island Advocacy Center	999 Herricks Rd., New Hyde Park	Mon.-Fri. 9am-5pm	Parents with developmental disabilities and their children	No Fee	Empowering Developmentally Disability parents how to advocate with educational system	Audrey Diaz (516) 248-2222 x.10 <a href="mailto:adiaz@theliac.org">adiaz@theliac.org</a>



# IN-HOME RESPITE

AGENCY	LOCATION	SERVICE HOURS	POPULATION SERVED	FEE	COMMENTS	CONTACT PERSON
A-1 Universal Care	400 Post Ave, Suite 302 Westbury	Days & Evening – as needed	Ages: 6-60 years Developmentally Disabled	No Fee	Nassau County Only Can serve people with 1:1 supports	Donna Harris (516) 338-8777 x 12 <a href="mailto:dharris@a1universalcare.org">dharris@a1universalcare.org</a>
Adults and Children with Learning & Developmental Disabilities (ACLD)	807 S. Oyster Bay Rd Bethpage	Day & Evening 15 hours per month	All Ages Developmentally Disabled	No Fee	Nassau & Suffolk Counties	Stellie Louis 516-822-0028 x.358 <a href="mailto:louiss@aold.org">louiss@aold.org</a>
Bais Ezra	3611 14 <sup>th</sup> Ave Suite 550 Brooklyn	Day & Evening	All Ages Developmentally Disabled	No Fee	Nassau County Only	Jesse Kenigsberg (718) 686-3487 <a href="mailto:jesse_kenigsberg@ohelfamily.org">jesse_kenigsberg@ohelfamily.org</a>
Haitian Americans United for Progress, Inc. (HAUP)	221-05 Linden Blvd. Cambria Heights	9am – 9pm	Ages: 3 years & up Developmentally Disabled	No Fee	Nassau & Suffolk Counties	Director of Programs Nyvrose Mompont- Fieurant (718) 527-3776 x.13 <a href="mailto:nmfleurant@haupinc.org">nmfleurant@haupinc.org</a> John Fontus Program manager (718_527-3272 X.2 <a href="mailto:jfontus@haupinc.org">jfontus@haupinc.org</a>



# IN-HOME RESPITE

AGENCY	LOCATION	SERVICE HOURS	POPULATION SERVED	FEE	COMMENTS	CONTACT PERSON
Helen Keller Services for the Blind	1 Helen Keller Way Hempstead & 3855 Veterans Memorial Highway Ronkonkoma	24 hours a day 7 days a week	Adults Developmentally Disabled	No Fee	Nassau & Suffolk Counties Trained staff provide respite services in home.	Lorraine LoCurto 516-485-1234 x.610
Independent Group Home Living (IGHL)	221 North Sunrise Service Road Manorville	Day & Evening	All Ages Developmentally Disabled	\$1 per hour per child	Eastern Suffolk County	Tracey DelDuca (631) 878-0636 <a href="mailto:tdelduca@ighl.org">tdelduca@ighl.org</a>
Innovative Resources for Independence (IRI)	93-22 Jamaica Avenue 2 <sup>nd</sup> Floor Woodhaven	As needed – 10 hours per week	All Ages Autistic	No Fee	Nassau County Only	Timothy Coleman (646) 294-0544 <a href="mailto:tcoleman@in-res.org">tcoleman@in-res.org</a> Estefania Tineo (917) 717-1325 <a href="mailto:etineo@in-res.org">etineo@in-res.org</a>
Nassau/Suffolk Services for the Autistic (NSSA)	The Martin C. Barell School 80 Hauppauge Road Commack	Day & Evening	Ages: 4 years & up Autistic/ Autistic Spectrum	Sliding Scale	Nassau & Suffolk Counties	Jason Watson Christen McPherson (631) 462-0386 <a href="mailto:jwatson@nssa.org">jwatson@nssa.org</a> <a href="mailto:cmcpherson@nssa.org">cmcpherson@nssa.org</a>
Quality Services for the Autism Community (QSAC)	253 West 35 <sup>th</sup> Street 16 <sup>th</sup> floor New York, NY 10001	Day & Evening Weekdays Weekend	Ages: 3 years & up Autistic/PDD	No Fee	Nassau County Only Ongoing & crisis, in home respite	Vicki Ramsay (718) 728-8476 x.1259 <a href="mailto:vramsay@qsac.com">vramsay@qsac.com</a>
United Cerebral Palsy Association of Greater Suffolk County, Inc. (UCP of Suffolk)	250 Marcus Blvd. Hauppauge	Day & Evening	Ages: Birth to 21 years Developmentally Disabled	Voucher Reimbursement	Suffolk County Only	Jane Kay (631) 232-0011 x. 415 <a href="mailto:jkay@ucp-suffolk.org">jkay@ucp-suffolk.org</a>



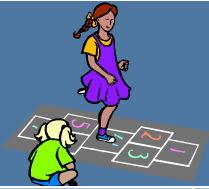
# OVERNIGHT FREESTANDING RESPITE

AGENCY	LOCATION	SERVICE HOURS	POPULATION SERVED	FEE	COMMENTS	CONTACT PERSON
Association for the Help of Retarded Children of Nassau County (AHRC Nassau) (Citizen's Inc.)	7 Fisher Lane Levittown	Scheduled as needed, overnight or weekly	Ages: 21 years & up no medical or behavioral problems requiring special supervision	No Fee	Nassau County Only Day respite is also available on weekends	Jillian Peneghetti (516) 653-0141 <a href="mailto:ahrc4420r@optonline.net">ahrc4420r@optonline.net</a>
Association for the Help of Retarded Children of Suffolk County (AHRC Suffolk)	1210 Portion Rd. Holtsville	7 days a week – except major holidays	Ages: 21 years & up Independent in ADL skills, no medical or behavioral problems requiring special supervision	No Fee	Suffolk County Only Transportation only available from AHRC Day Programs in Bohemia Ambulatory	Brook Johnson-Scalese (631) 585-0100 x. 520 <a href="mailto:bjohnson@suffahrc.org">bjohnson@suffahrc.org</a>
East End Disability Associates, Inc. (EEDA)	32 Circle Drive Shoreham	Fri – Mon. 3 pm – 9am	Children and adults Developmentally disabled	No Fee	Nassau & Suffolk Counties	(631) 369-7345 (631) 369-2292
Family Residences & Essential Enterprises, Inc (FREE)	1363 North Jerusalem Road E. Meadow	Scheduled as needed overnight or weekly 24/7	Ages: 8 years & up Developmentally Disabled No medical or behavioral problems requiring special supervision	No Fee	Nassau & Suffolk Counties Ambulatory	Astrido St. Surin x. 3462 <a href="mailto:astsurin@familyres.org">astsurin@familyres.org</a> Nicky Faranda x.3539 <a href="mailto:nfaranda@familyres.org">nfaranda@familyres.org</a>
Independent Group Home Living, Inc. (IGHL)	1350 Wm. Floyd Pkwy. Shirley	Scheduled as needed hourly (Minimum 8 hrs.) Overnight or weekly	Ages: 3 years & up Developmentally Disabled	No Fee	Nassau & Suffolk Counties Ambulatory	Tracey DelDuca (631) 878-0636 <a href="mailto:tdelduca@ighl.org">tdelduca@ighl.org</a> House #: (631) 878-8886



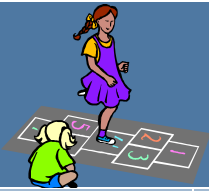
# OVERNIGHT FREESTANDING RESPITE

AGENCY	LOCATION	SERVICE HOURS	POPULATION SERVED	FEE	COMMENTS	CONTACT PERSON
Independent Group Home Living, Inc.	138 Holbrook Rd. Holbrook, NY (631) 467-1205	Scheduled as needed hourly (Minimum 8 hrs.) overnight or weekly	Ages: 3 years & up Developmentally Disabled	No Fee	Nassau & Suffolk Counties Non-Ambulatory	Tracey DelDuca (631) 878-0636 <a href="mailto:tdelduca@ighl.org">tdelduca@ighl.org</a> Michelle DiGrantomasso (631) 878-0636
Long Island Developmental Disabilities Services Office (LIDDSO)	Melville and Center Moriches	Open weekends Friday 4pm to Sunday 4pm	All Ages Developmentally Disabled	No Fee	Nassau & Suffolk Counties Ambulatory	Regina Santo (631) 385-3125 <a href="mailto:regina.santo@opwdd.ny.gov">regina.santo@opwdd.ny.gov</a>
United Cerebral Palsy Association of Greater Suffolk (UCP of Suffolk)	159 Indian Head Road Commack	Open 24 hours a day 7 days a week	Ages: 10 years & up Developmentally Disabled	No Fee	Nassau & Suffolk Counties Non-ambulatory Medically involved	Katelyn Owens (631) 543-5166 x. 286 <a href="mailto:kowens@ucp-suffolk.org">kowens@ucp-suffolk.org</a>
YAI -National Institute for People w/Disabilities (YAI/NIPD)	211 Old South Path Melville	Open Thursday - Tuesday 3pm – 10am Open 7 days through the summer	Ages: Pre-School to Adults All Developmental Disabilities	No Fee	Nassau & Suffolk Counties One emergency bed per week	Stephen Higgins (631) 423-0460 <a href="mailto:stephen.higgins@yai.org">stephen.higgins@yai.org</a>
YAI -National Institute for People w/Disabilities (YAI/NIPD)	2040 Edith Place Merrick	Friday 3pm to Sunday 5pm	All Ages All Developmental Disabilities	No Fee	Nassau County Only 5:2 staffing Wheelchair accessible	Stephen Higgins (631) 423-0460 <a href="mailto:stephen.higgins@yai.org">stephen.higgins@yai.org</a>



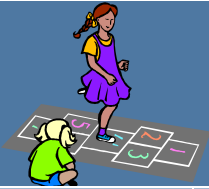
# WEEKEND & RECREATION RESPITE PROGRAMS

AGENCY	LOCATION	SERVICE HOURS	POPULATION SERVED	FEE	COMMENTS	CONTACT PERSON
A-1 Universal Care, Inc.	St. John's Episcopal Church Parrish Hall 536 S. Franklin St. Hempstead	Saturdays Only 10am – 3pm	Ages: 5-22 years Developmentally Disabled	No Fee	Nassau County Only	Dennis Walker (516) 338-8777 <a href="mailto:dwalker1@a1universalcare.org">dwalker1@a1universalcare.org</a>
Association for Children with Down Syndrome (ACDS)	4 Fern Place Plainview	Meets 2x a month on Sundays	Ages: 15-21 years Developmentally Disabled	Varies accord to activity	Nassau & Suffolk Counties ICE Program (Integrated Community Experience)	Brian Laubis (516) 605-2391
Association for Children with Down Syndrome (ACDS)	4 Fern Place Plainview	Saturdays 10am-2pm	Ages: 5 years and older	No Fee	Nassau and Suffolk Counties Arts & Crafts, music, computers, cooking	Brian Laubis (516) 605-2391
Association for Children with Down Syndrome (ACDS)	270 Washington Avenue Plainview	Friday 6:30pm – 9:30pm Jan – April	Teenage and Adults Down Syndrome & Developmentally Disabled	Fee	Nassau & Suffolk Counties Drop-in-lounge Karaoke – socialization	Brian Laubis (516) 605-2391
Brookville Center for Children's Services	189 Wheatley Rd Brookville	Saturdays 10am-3pm	Ages: 5 – 21 years Developmentally Disabled Autism spectrum	No Fee	Nassau & Suffolk Counties Wheelchair Accessible Respite Recreation Program	Pam Ali (516) 626-1075 x.3328 <a href="mailto:pali@brookvillecenter.org">pali@brookvillecenter.org</a> Marianne Klotz (516) 626-1000 x.3351 <a href="mailto:mklotz@brookvillecenter.org">mklotz@brookvillecenter.org</a>
Brookville Center for Children Services	189 Wheatley Rd Brookville Cissy Birnbaum Building	Alternate Saturdays 9am – 1pm 2 eight session programs Sept to Dec & Feb to May	Ages: 5-18 years Autism Spectrum Disorder	No Fee	Recreation/Social Skills Program Peer mentors assist the children in social settings Activities include: playground, arts & crafts, cooking and games No transportations and must provide own lunch	Sherry Black (516) 626-1075 x.2410 <a href="mailto:sblack@brookvillecenter.org">sblack@brookvillecenter.org</a> Jennifer Moore x.3327 <a href="mailto:jmoore@brookvillecenter.org">jmoore@brookvillecenter.org</a> Marianne Klotz x.3351 <a href="mailto:mklotz@brookvillecenter.org">mklotz@brookvillecenter.org</a>



# WEEKEND & RECREATION RESPITE PROGRAMS

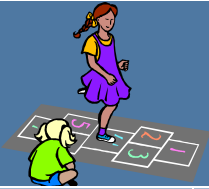
AGENCY	LOCATION	SERVICE HOURS	POPULATION SERVED	FEE	COMMENTS	CONTACT PERSON
Central Nassau Guidance & Counseling Services, Inc.	Starry Night Café 459 S. Broadway Hicksville	Thur: 5-9pm Fri: 4 – 11pm Sat: 4-11pm	Ages: 18 years & up Developmentally Disabled	No fee for program	Nassau & Suffolk Counties Consumer-operated coffee house, nightclub environment catering to the creative talents of persons with disabilities Food and beverages can be purchased by patron	B. Artale (516) 396-2800 <a href="mailto:bartale@centralnassau.org">bartale@centralnassau.org</a> Lina Vina (516) 369-2751 <a href="mailto:skaplan@centralnassau.org">skaplan@centralnassau.org</a>
East End Disability Associates, Inc. (EEDA)	Site rotates throughout Eastern Suffolk County based on family need	10am-3pm 20 Saturdays a year	Ages: 5-21 years Developmentally Disabled	No Fee	Families need to provide transportation	Christine Proietti (631) 369-7345 x.121 <a href="mailto:christineq@eed-a.org">christineq@eed-a.org</a>
East End Disability Associates, Inc. (EEDA)	784 Harrison Avenue Riverhead	3 evenings a week 5pm – 7pm	18 years & up Developmentally Disabled	No Fee	Suffolk County East End	Shoshannah Jacobs (631) 591-2834 <a href="mailto:shoshannahj@eed-a.org">shoshannahj@eed-a.org</a> Kimberly Schiblier <a href="mailto:kimberlys@eed-a.org">kimberlys@eed-a.org</a>
East End Special Players	Southampton Senior Citizen's Center Bridgehampton/Sag Harbor Turnpike Southampton	Saturdays 12pm – 3:30pm	Adults Developmentally Disabled	No Fee	Other locations for theatrical program	Paul Rogers <a href="mailto:paulcra@optonline.net">paulcra@optonline.net</a> Hilary Jackson (631) 726-4477
Economic Opportunity Council (EOC)	320 Carlton Avenue Suite 7800 Central Islip	Saturdays 10am – 5pm	Ages: 15 years & up Developmentally Disabled	No Fee	Nassau & Suffolk Counties Transportation & Lunch provided Participants can also hire their own staff and schedule program times as needed	Simone Holder <a href="mailto:sholder@eoc-suffolk.com">sholder@eoc-suffolk.com</a> Cicely Hobbs (631) 666-6471 x.602 <a href="mailto:chobbs@eoc-suffolk.com">chobbs@eoc-suffolk.com</a>
EPIC LI	506 Stewart Ave. Garden City	Alternate Saturdays 10 am-3pm	Ages: 18 years & up Developmentally Disabled	No fee	Nassau & Suffolk Counties No transportation Lunch provided	Debbie-Ann Chang (516) 739-7733 x1328 <a href="mailto:dchang@epil.org">dchang@epil.org</a>



# WEEKEND & RECREATION RESPITE PROGRAMS

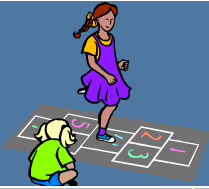
AGENCY	LOCATION	SERVICE HOURS	POPULATION SERVED	FEE	COMMENTS	CONTACT PERSON
Family Residences & Essential Enterprises, Inc. (FREE)	28 Research Way East Setauket & 120 Plant Ave Hauppauge	Saturdays 10:30am - 1:30pm	Ages: 5 years & up Developmentally Disabled	No Fee	Suffolk County Only	Amanda Baker (631) 689-2525 x.2544
Family Residences & Essential Enterprises, Inc. (FREE)	Saddle Rock Ranch 41 Coram Swezeytown Road Coram	Mon - Fri 9am - 5pm Saturday 10am - 2:30pm	Ages: 5 years and up Developmentally Disabled	\$40 per session /no fee	Nassau & Suffolk Counties - Therapeutic Riding Program/Pet Therapy	Daniel Twitchell (631) 345-0318 <a href="mailto:Dtwitchell01@familyres.org">Dtwitchell01@familyres.org</a>
Family Residences & Essential Enterprises, Inc. (FREE)	191 Sweet Hollow Rd. Old Bethpage	Monday Evenings 6pm-9pm	14 years & up Autism spectrum disorders and other mild Developmental Disabilities	No fee	Nassau & Suffolk Counties Fully accessible Includes open-microphone, karaoke, musical & dance performances, poetry readings, etc A selection of creative and healthy snacks and beverages provided	Sue Binder (516) 870-1667
Family Residences & Essential Enterprises, Inc. (FREE)	191 Sweet Hollow Rd. Old Bethpage	Sundays Twice a month 11am-4pm	18 years & up Developmental Disabilities	No fee	Nassau & Suffolk Counties Program is fully accessible Includes sports, arts & crafts, musical & dance parties, photography, floral design, health & beauty classes, etc Also includes creative & healthy snacks and beverages	Sue Binder (516) 870-1667





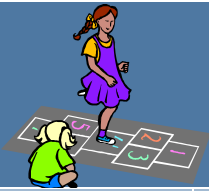
# WEEKEND & RECREATION RESPITE PROGRAMS

AGENCY	LOCATION	SERVICE HOURS	POPULATION SERVED	FEE	COMMENTS	CONTACT PERSON
Eden II/Genesis	The Genesis School 270 Washington Ave. Plainview	24 trips per year 9am – 3pm	Ages: 5 and up Autism	\$40 per trip	Nassau & Suffolk Counties Wheelchair Accessible Community based recreation and leisure program Transportation is not provided	Jillian Panni 516-937-1397 x.511 <a href="mailto:jpanni@eden2.org">jpanni@eden2.org</a>
Head Injury Association (HIA)	300 Kennedy Drive Hauppauge	Vary depending upon activity	Ages: 18 years & up Individuals with head injuries and Developmental Disabilities	No fee	Nassau & Suffolk Counties	Nancy Kritzer-Berlin (631) 543-2245 x 4014 <a href="mailto:nkberlin@lihia.org">nkberlin@lihia.org</a>
Helping Hands Behavioral Outreach, Inc	191 Sweet Hollow Rd Old Bethpage	Saturdays 10am – 3pm	Ages: 5 – 21 years Individuals with Autism and Developmental Disability	Sliding Scale	Includes art & music therapy, behavior goal planning, one to one staffing, recreational events, dance, cooking No Transportation	Brittaney Lanza (631) 659-3337 x.3
Human First, Inc.	128 Atlantic Avenue Lynbrook	Saturdays 9am – 4pm	Adults & Children Developmentally Disabled	No Fee	Transportation & lunch provided from central pick-up	Lasana Rayside (516) 823-9500 x.224
Independent Group Home Living, Inc. (IGHL)	221 North Sunrise Service Road Manorville	Saturdays 9:30am-2:30pm Sept-May	Ages: 3 years & up Developmentally Disabled	No Fee	Suffolk County Only Transportation provided & snack	Tracey DelDuca (631) 878-0636 <a href="mailto:tdelduca@ighl.org">tdelduca@ighl.org</a> Michelle DiGiantomasso (631) 878-0636
Independent Group Home Living, Inc. (IGHL)	221 North Sunrise Service Road Manorville	Vary depending on activity	Ages: 5 years & up Developmentally Disabled	None	Suffolk County Only Community integrated activities No transportation	Tracey DelDuca (631) 878-0636 <a href="mailto:tdelduca@ighl.org">tdelduca@ighl.org</a> Michelle DiGiantomasso (631) 878-0636
Independent Group Home Living, Inc. (IGHL)	221 North Sunrise Service Road Manorville	Two Fridays a month 6pm – 10pm	Ages: 16 years & up Developmentally Disabled	Minimal fee at times	Suffolk County Only Community integrated activities Central pickup for transportation	Tracey DelDuca (631) 878-0636 <a href="mailto:tdelduca@ighl.org">tdelduca@ighl.org</a> Michelle DiGiantomasso (631) 878-0636



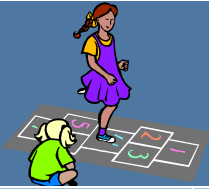
# WEEKEND & RECREATION RESPITE PROGRAMS

AGENCY	LOCATION	SERVICE HOURS	POPULATION SERVED	FEE	COMMENTS	CONTACT PERSON
Independent Group Home Living, Inc. (IGHL)	221 North Sunrise Service Road Manorville	2 trips per year	Ages: 16 years & up Developmentally Disabled	No Fee	Suffolk County Only Overnight travel programs	Tracey DelDuca (631) 878-0636 <a href="mailto:tdelduca@ighl.org">tdelduca@ighl.org</a> Michelle DiGiantomasso (631) 878-0636
Independent Group Home Living, Inc. (IGHL)	221 North Sunrise Service Road Manorville	Varies depending on activity	Ages: 16 years & up Developmental Disabled	Cost varies on activity	Suffolk County Only Community integrated activities 1:1 Transportation	Tracey DelDuca (631) 878-0636 <a href="mailto:tdelduca@ighl.org">tdelduca@ighl.org</a> Michelle DiGiantomasso (631) 878-0636
Independent Group Home Living, Inc. (IGHL)	221 North Sunrise Service Road Manorville	Varies depending on activity	Ages: 10 years & up Autism & Autism Spectrum Disorder	No Fee	Sports Activities & Fitness Program Four sessions per year (Summer/Fall/Winter/Spring) Lasts approx 3 weeks	Tracey DelDuca (631) 878-0636 <a href="mailto:tdelduca@ighl.org">tdelduca@ighl.org</a> Michelle DiGiantomasso (631) 878-0636
IRIE	By appointment only	Mon-Sat	Developmentally Disabled Children	Sliding Scale	Therapeutic Horseback Riding Equestrian Related Activities	Joy Rootkowski (631) 871-1916 <a href="mailto:iriehorses@aol.com">iriehorses@aol.com</a>
Just Kids	35 Longwood Rd. Middle Island	Saturdays 9am-1pm	Ages: Preschoolers 2-6 years Developmentally Disabled	\$2.00 per session	Integrated community activities Recreational & socialization program	Patricia Brandow (631) 924-0008 x.241 <a href="mailto:wagswilly@optonline.net">wagswilly@optonline.net</a>
Kulanu	620 Central Avenue Cedarhurst	Tuesdays, Wednesdays	Teens Developmentally Disabled	\$10 per session	Wheelchair accessible. Program has full gym, sensory rooms, offsite activities with community volunteers and professionals	Jonathan Cooper (516) 569-3083 x.135 <a href="mailto:jonathanc@kulanukids.org">jonathanc@kulanukids.org</a>
Life's WORC	1501 Franklin Ave. Garden City	Saturdays 11am-4 pm	Ages: 13 years - Adult Mild to Moderate Mental Retardation & Autism	No Fee	Centralized pickups in Nassau & Suffolk Counties: Lynbrook, Merrick, Garden City, Dix Hills	Rosemary Barlone (516) 741-9000 x.253 <a href="mailto:rbarlone@lifesworc.org">rbarlone@lifesworc.org</a>
Life's WORC	Glen Cove YMCA & Bay Shore YMCA	2 Saturdays a month 11am - 2pm	Ages 5-12 years Autism Only	No Fee	Nassau & Suffolk Counties 2:5 staff to children ratio and an additional on site supervisor	Kristen Schreck (516) 741-9000 x.355 <a href="mailto:kschrek@lifesworc.org">kschrek@lifesworc.org</a>



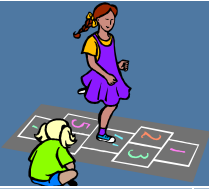
# WEEKEND & RECREATION RESPITE PROGRAMS

AGENCY	LOCATION	SERVICE HOURS	POPULATION SERVED	FEE	COMMENTS	CONTACT PERSON
Long Island Toy Lending Center for Children with Disabilities	Farmingdale Library 116 Merritts Road Farmingdale & Town of Hempstead E. Marina, Point Lookout	Mon.-Fri. 9am-5pm	Ages: infants -15 yrs Developmentally Disabled	Sliding Scale	Nassau & Suffolk Counties Resource Center & Toy Lending Library One weeknight per month (4 hours per night)	Colleen Moseman (516) 889-8287 <a href="mailto:litoycenr@gmail.com">litoycenr@gmail.com</a>
Maryhaven Center of Hope	455 County Road 101 Yaphank	Saturdays 10am – 2pm	Ages: 10 years & up Developmentally Disabled	No Fee	Suffolk County Only Onsite & community integrated activities No transportation Wheelchair Accessible	Phil Orofino (631) 924-5900 x.195 <a href="mailto:phillip.orofino@chsli.org">phillip.orofino@chsli.org</a>
Mill Neck Services	501 So. Broadway Hicksville	Wednesday evenings 6pm-9pm Saturdays 10am-2pm 2x a month	Deaf & Developmentally Disabled	No Fee	Nassau & Suffolk Counties Recreation Café	Loretta Murray (516) 922-3818 <a href="mailto:deafmns@aol.com">deafmns@aol.com</a>
Nassau/Suffolk Services for the Autistic, Inc. (NSSA)	80 Hauppauge Road Commack	Jan.-June, Sept. – Dec. & July & Aug 2 sessions 2 Saturdays a month 10am – 3pm	Ages: 4-21 years Autistic/ Autistic Spectrum	\$20 each session	Nassau & Suffolk Counties	Christen McPherson George Williams (631) 462-0386 <a href="mailto:gwilliams@nssa.net">gwilliams@nssa.net</a>
School for Language and Communication Development (SLCD)	100 Glen Cove Ave. Glen Cove	Saturdays 10am – 3pm	Ages: 3 to 15 years Children with Autism & Developmental Disabilities	No Fee	Nassau & Suffolk Counties Recreation based and includes music, dance, gym and art	Christine Austin 516-609-2000 x.137 <a href="mailto:caustin@slcd.org">caustin@slcd.org</a>
Sid Jacobson Jewish Community Center	300 Forest Drive East Hills	Saturdays 6pm – 9pm	Ages: 9-21 years Developmentally Disabled & Autistic	No Fee	Nassau & Suffolk Counties Open for 18 Saturday nights during the year	Stacy Denison (516) 484-1545 x175 <a href="mailto:sdenison@sjjcc.org">sdenison@sjjcc.org</a>



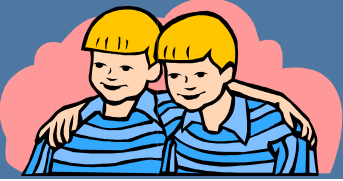
# WEEKEND & RECREATION RESPITE PROGRAMS

AGENCY	LOCATION	SERVICE HOURS	POPULATION SERVED	FEE	COMMENTS	CONTACT PERSON
Special Olympics – Long Island	Different Location Every Year.	One day event 10:30am-2:30pm	Developmentally Disabled Children & Adults	No Fee	Young Athlete Skills Tournament	Rebecca Strickland (631) 254-1465 x4203 Tim Flynn (631) 254 1465 x4202
Special Olympics – Long Island	Jefferson Primary School 253 Oakwood Rd Huntington	10am – 12pm	Developmentally Disabled Children & Adults	No Fee	Year Round	Rebecca Strickland (631) 254-1465 x4203 Tim Flynn (631) 254 1465 x4202
United Cerebral Palsy of Suffolk County (UCP of Suffolk)	250 Marcus Blvd. Hauppauge	One per month, 2 <sup>nd</sup> Thursday "Thursday Club" 3:30pm – 6:30pm	Adults Developmentally Disabled	No Fee	No Transportation	Irene Rielly (631) 232-0011 x.552 <a href="mailto:irielly@ucp-suffolk.org">irielly@ucp-suffolk.org</a>
United Cerebral Palsy of Suffolk County (UCP of Suffolk)	250 Marcus Blvd. Hauppauge	10am – 2pm 48 Saturdays a year	Developmentally Disabled	No Fee	Suffolk County Limited transportation Bring own lunch	Keith Jones (631) 232-0011 x.607 <a href="mailto:kjones@ucp-suffolk.org">kjones@ucp-suffolk.org</a>
United Cerebral Palsy of Suffolk County (UCP of Suffolk)	250 Marcus Blvd. Hauppauge	Saturdays 10:30am – 1:30pm 46 Saturdays Annually	Adults who are medically frail, multi-handicapped who need medical monitoring, physical care and assistance	No Fee	Limited transportation provided within 10 mile radius or families can transport. Max of 12 individuals per Saturday Families to provide lunch, diapers, medications, etc	Keith Jones (631) 232-0011 x.607 <a href="mailto:kjones@ucp-suffolk.org">kjones@ucp-suffolk.org</a>
Variety Child Learning Center	47 Humphrey Dr. Syosset	16 Sundays – Oct. & Jan. Feb. & June 9:30 – 3:30pm	Ages: 3-10 years Developmentally Disabled Autism Spectrum Also can have non-disabled siblings	\$10 for 1 non-disabled \$15 for 2 or more non-disabled sibling per day.	Children bring lunch, snack is provided Peanut free building Some staff bilingual	Rebecca Esquillin (516)921-7171 x. 2104 <a href="mailto:resquillin@vclc.org">resquillin@vclc.org</a>



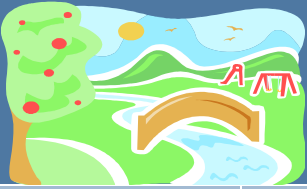
# WEEKEND & RECREATION RESPITE PROGRAMS

AGENCY	LOCATION	SERVICE HOURS	POPULATION SERVED	FEE	COMMENTS	CONTACT PERSON
YAI – National Institute for People with Disabilities (YAI) Independent Living Program	Session Nassau: 96 Willis Ave., Mineola Session Suffolk: 555 Washington Ave. Brentwood	Mon, Tues, or Wed 6:30 pm – 8:30 pm	Ages: 18 & up Developmentally Disabled Autism Spectrum Disorder	No Fee	Closed on holidays Transportation not included Sessions alternate between Nass & Suff Every 24 weeks	Stacy Hagan (631) 967-7109



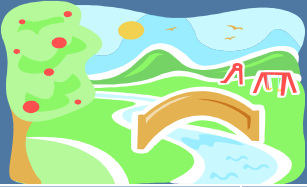
## SIBLING SUPPORT

AGENCY	LOCATION	SERVICE HOURS	POPULATION SERVED	FEE	COMMENTS	CONTACT PERSON
Big Brothers- Big Sister of Long Island	145 Sycamore Ave. Islandia  Main Office: 70 Acorn Ave Levittown	Mon, Tues & Fri 9am – 5pm  Wed & Thurs 9am – 8:30pm	Ages: 7-14 years Siblings of Developmentally Disabled individuals	No Fee	Nassau & Suffolk Counties Siblings share a weekly outing & activity with a A Big Brother or Big Sister	Josephine Todisco (516) 731-7880 x4869 <a href="mailto:jtodisco@bbbsli.org">jtodisco@bbbsli.org</a>
Quality Services for the Autism Community (QSAC)	872 Atlantic Ave Baldwin	Meet first and third Tuesday of the month 7pm – 8:30pm	Parent and sibling support groups for families that have a child or sibling with Autism Spectrum Disorder	No Fee	Nassau & Suffolk Counties	Lisa Veqlia (212) 244-5560 x.2017 <a href="mailto:lveqlia@qsac.com">lveqlia@qsac.com</a> Charesse Hutcherson (718) 728-8476 x1430



# TOWN RECREATION

AGENCY	LOCATION	SERVICE HOURS	POPULATION SERVED	FEE	COMMENTS	CONTACT PERSON
Suffolk County Council Boy Scouts Special Needs Division 7 Scouting Blvd. Medford	Various sites in Suffolk	Days & Evenings Depending on the site	Ages: 6 years & up (boys) Co-ed Ages: 14 years & up Developmentally Disabled	Registration Fee	Suffolk County Only Social & recreational activities that work on fostering life skills, self sufficiency and good citizenship	Lauren Vlachos (631) 924-7000 x 137 <a href="mailto:lvlachos@bsamail.org">lvlachos@bsamail.org</a>
Town of Babylon Human & Therapeutic Services, Inc. 200 E. Sunrise Hwy, Lindenhurst	Various schools in the town of Babylon. Town of Babylon Annex & Babylon Bowling Alley	Evenings Mondays, Wednesdays & Fridays	Ages: 7 years & up Developmentally Disabled	Registration Fee \$15 \$20 for Bowling	Transportation provided: Arts & crafts, field trips, bowling, & swimming	Claire McKeon 631-422-7660 Laura Wexelbaum 631-893-1050
Town of Brookhaven Dept. Of Parks, Recreation & Sports & Cultural Resources 1130 Old Town Road, Coram	Various sites in Town of Brookhaven	Evenings & Saturdays	Ages: 15 years & up Developmentally Disabled	Activity Based Fee	Bowling, swimming, dances & other activities	Elaine Gallagher (631) 451-6108 <a href="mailto:egallagher@brookhaven.org">egallagher@brookhaven.org</a>
Town of Hempstead Dept. Of Recreation (Anchor) 630 Lido Blvd Lido Beach	Camp Anchor Town Park at Lido Beach	Mon – Fri 9am-3pm 6 week in summer - July & August	Ages: 5 years & up Developmentally Disabled	No Fee	Transportation provided	Maryann Hanson (516) 801-5644
Town of Hempstead Dept. Of Recreation (Anchor) 630 Lido Blvd Lido Beach	School Year Recreation Programs	Mon-Fri Afternoon and evenings 9am – 2:30 Saturdays – Oct. – May	Ages: 5 years & up Developmentally Disabled	No Fee	Transportation provided	Maryann Hanson (516) 801-5644
Town of North Hempstead Dept. Of Parks & Recreation	Clinton G. Martin Park Recreation Center Marcus Ave. & New Hyde Park Rd. New Hyde Park	Sept.- June Saturdays 9:30am-3:30pm July & August – Tues.-Sat. 10am-3pm	Ages: 5 & up Developmentally Disabled	No Fee	Arts & Crafts, swimming, special events, field and summer camp Must live in North Hempstead	Mary Mahaffey (516) 739-3113 <a href="mailto:mahaffeym@northhemsteadny.gov">mahaffeym@northhemsteadny.gov</a>



# TOWN RECREATION

AGENCY	LOCATION	SERVICE HOURS	POPULATION SERVED	FEE	COMMENTS	CONTACT PERSON
Town of Huntington Department of Parks & Recreation Town Hall 100 Main Street Huntington	Young Teen Program Maplewood Elementary	Saturdays Oct – June 10:30am–1:30pm	Children 9-19 years	\$75 for resident \$100 for non-resident	Saturday Recreation Program	Jack Fass (631) 351-3071 <a href="mailto:jfass@huntingtonny.gov">jfass@huntingtonny.gov</a>
	Summer Camp in Commack	6 weeks M-F 9am – 2:30pm	Ages: 6 - adult Developmentally Disabled	\$150 for resident \$500 for non-resident	Summer Camp	
Town of Islip Department of Human Services Division of Therapeutic Recreation	Dance only @ David Sanders Dance 4110 Sunrise Highway Oakdale	Fridays 2 sessions per day Sep – June	Ages: 6-21 years Developmentally Disabled	No Fee	Modern Dance Program Ages 6-13 5-6pm Ages 14-21 6-7pm	Joanne Folber (631) 224-5320 <a href="mailto:youthbureau@townofislip-ny.gov">youthbureau@townofislip-ny.gov</a>
Town of Oyster Bay Department of Community Services Group Activities Program (GAP) 977 Hicksville Rd., Massapequa	Syosset & Woodbury Community Centers	Oct. - May Evenings & Saturdays Summer day camp	Ages: 5 years & up Developmentally Disabled -	\$100	Arts & Crafts, sports, dancing, games, bowling, swimming, drama groups 6 week, summer day camp & evening summer program Saturday evening respite 1x a month, field trips	Mary Hurst (516) 797-7948 <a href="mailto:mhurst@oysterbay-ny.gov">mhurst@oysterbay-ny.gov</a>
Town of Oyster Bay Department of Community Services Group Activities Program (GAP) 977 Hicksville Rd., Massapequa	Syosset & Massapequa Community Centers	Fridays 7pm – 9pm October – May	Ages: 5 – 20 years Autism	No Fee except for field trips	Arts & crafts, dancing, bowling, and other activities Field trips are planned once a month	Mary Hurst (516) 797-7948 <a href="mailto:mhurst@oysterbay-ny.gov">mhurst@oysterbay-ny.gov</a>
Town of Smithtown Recreation Department 495 Landing Ave. Smithtown, NY 11787	Various schools in Smithtown	Evenings	Ages: 16 years & up Developmentally Disabled	No Fee	Socials, arts & crafts, field trips, bowling & swimming	Sue Cappelmann (631) 360-7646 <a href="mailto:suecapp@optonline.net">suecapp@optonline.net</a>





# VOUCHER REIMBURSEMENT PROGRAM

AGENCY	LOCATION	SERVICE HOURS	POPULATION SERVED	FEE	COMMENTS	CONTACT PERSON
Association for Children with Down Syndrome (ACDS)	665 North New Bridge Road Levittown	Mon.-Fri. 8:30am-4:30pm	All Ages Developmentally Disabled	No Fee	Nassau & Suffolk Counties Reimbursement for respite and other goods & services which cannot be funded through other resources	Erica Lepurage (516) 605-2391 x102 <a href="mailto:elepurage@acds.org">elepurage@acds.org</a>
Association for the Help of Retarded Children of Nassau County (AHRC Nassau) (Citizen's Inc.)	115 E. Bethpage Road Plainview	9am-5pm	Developmentally Disabled Children & Adults	No Fee	Nassau County Only Reimbursement for respite & other services & goods which cannot be funded through other resources	Mindy Goodman (516) 293-2016 x.5607 <a href="mailto:mgoodman@ahrc.org">mgoodman@ahrc.org</a>
Association for the Help of Retarded Children of Suffolk County (AHRC Suffolk)	2900 Veterans Memorial Hwy Bohemia	8:30am- 4:30pm	Developmentally Disabled Children & Adults	No Fee	Suffolk County Only Payers of last resort for any goods & services	Betsy Honeycutt (631) 585-0100 x. 579 <a href="mailto:bhoneycutt@suffahrc.org">bhoneycutt@suffahrc.org</a>
Angela's House	PO Box 5052 Hauppauge	9am-4pm	Medically frail, chronically ill, technology dependent and developmentally disabled	No Fee	Nassau & Suffolk Counties Reimbursement for services & goods which cannot be funded through other resources	Barbara Squillacioti (631) 328-1069 <a href="mailto:bsquillacioti@angelashouse.org">bsquillacioti@angelashouse.org</a>
East End Disability Associates, Inc. (EEDA)	107 Roanoke Avenue Riverhead	9am – 5pm	All Ages Medically Fragile & Developmentally Disabled	No Fee	Eastern Suffolk Only Reimbursement for services & supplies that cannot be funded through any other sources	Joan Lucarelli (631) 369-7345 x.125 <a href="mailto:joan1@eed-a.org">joan1@eed-a.org</a>
Family Residences & Essential Enterprises, Inc. (FREE)	191 Sweet Hollow Rd Old Bethpage	Mon.-Fri. 9am-5pm	All Ages Developmental Disabilities & Autism Spectrum Disorder	No Fee	Suffolk County Reimbursement program for families of DD children for non-Medicaid reimbursable expenses and extraordinary expenses due to the persons disability	Kelly Lang (631) 273-1300 x. 3557 Nicky Faranda (631) 273-1300 x3539



# VOUCHER REIMBURSEMENT PROGRAM

AGENCY	LOCATION	SERVICE HOURS	POPULATION SERVED	FEE	COMMENTS	CONTACT PERSON
Head Injury Association (HIA)	300 Kennedy Drive Hauppauge	Mon.-Fri. 9am-5pm	All Ages Traumatic Brain Injury & Developmentally Disabled	No Fee	TBI support groups, Non-Medicaid Service Coordination, Referral & Resource, Advocacy Support & Reimbursement	Kristi Marcus (631) 543-2245 x 7485 <a href="mailto:kmarcus@headinjuryassoc.org">kmarcus@headinjuryassoc.org</a>
Jewish Community Center of the Greater Five Towns	207 Grove Avenue Cedarhurst	Mon.-Thurs. 8am – 4pm	All Ages Developmentally Disabled	No Fee	Wheelchair Accessible Hebrew & Russian speakers available	Yael Schochat (516) 569-6733x.211
Labor & Industry for Education, Inc. (LIFE)	112 Spruce Street Cedarhurst	Monday – Thursday 9am – 5pm Friday 9am – 1pm	All Ages Developmentally Disabled	No Fee	Nassau & Suffolk Counties Reimbursement for goods and services which cannot be funded through other resources.	Julie Eden 516-374-4564 x.1010 <a href="mailto:jeden@lifetech.org">jeden@lifetech.org</a>
Long Island Developmental Disabilities Service Office (LIDDSO)	415A Oser Ave. Hauppauge	8am- 4:30pm	All Ages Developmentally Disabled	No Fee	Nassau & Suffolk Counties Reimbursement for services/goods which cannot be funded through any other resources	Mary Nicolls (631) 416-3923 <a href="mailto:Mary.Rabbito-Nicolls@opwdd.ny.gov">Mary.Rabbito-Nicolls@opwdd.ny.gov</a>
SCO Family of Services	164 3 <sup>rd</sup> Avenue Brentwood	9am-5pm	Children & Adults Developmentally Disabled	No Fee	Nassau & Suffolk Counties Reimbursement for goods and services	Peggy Telesca (631) 273-2773 x. 203 <a href="mailto:patelesca@sco.org">patelesca@sco.org</a> Sherry Lewinter (631) 273-2773 X110
United Cerebral Palsy of Suffolk County (UCP of Suffolk)	250 Marcus Blvd. Hauppauge	Mon. – Fri. 8:30am – 4:30pm	Children & Adults Developmentally Disabled	No Fee	Suffolk County Only Reimbursement for goods and services	Michele Kuhl (631) 232-0011 x483
United Cerebral Palsy of Nassau County (UCP of Nassau)	380 Washington Ave Roosevelt	Mon. – Fri. 9am – 5pm	Children & Adults Developmentally Disabled	No Fee	Nassau County Only Reimbursement for goods and services	Elisa Rosen (516) 378-2000 x416



## NON-MEDICAID SERVICE COORDINATION

AGENCY	LOCATION	SERVICE HOURS	POPULATION SERVED	FEE	COMMENTS	CONTACT PERSON
A-1 Universal Care, Inc.	400 Post Avenue Suite 302 Westbury	Mon. – Fri. 9am – 5pm	Ages: 5-60 years Developmentally Disabled	No Fee	Nassau County Only Short term service coordination for individuals with Developmental Disabilities who are not Medicaid eligible	Donna Harris (516) 338-8777 <a href="mailto:dharris@a1universalcare.org">dharris@a1universalcare.org</a>
Adults & Children with Learning Disabilities (ACLD)	807 South Oyster Bay Road Bethpage	Mon.-Fri. 9am-5pm	Adults & Children Developmentally Disabled	No Fee	Nassau & Suffolk Counties Short term service coordination for individuals with DD who are not Medicaid eligible	Carla Oswald (516) 822-0028 x652 <a href="mailto:oswaldc@acld.org">oswaldc@acld.org</a>
Angela's House	P.O. Box 5052 Hauppauge	Mon.-Fri. 9am-4pm	Developmentally Disabled children – medically frail, technology dependent & chronically ill	No Fee	Nassau & Suffolk Counties Also does Crisis NMSC	Colleen Kunkel (631) 761-0128 <a href="mailto:ahcolleen@aol.com">ahcolleen@aol.com</a>
Bellport-Area Community Action Committee (BACAC)	471 Atlantic Avenue Bellport	Mon.-Fri. 8:30am-5pm	Ages: 3 years & up Developmentally Disabled	No Fee	Primarily minority families in South Country School District/North, Bellport Community	Yolanda Lucas (631) 286-3107
Center for Family Support, Inc.	110 Jericho Tpke, Suite 103 Floral Park	Mon. – Fri. Varied hours	Ages: 3 years & up Developmentally Disabled individuals without Medicaid	No Fee	Nassau & Suffolk Counties	Sarah Hindman (516) 292-3000 x. 427 <a href="mailto:shindman@cfsny.org">shindman@cfsny.org</a>
Center for Rapid Recovery (CRR)	312 Greenwich St Hempstead	Mon.-Fri. 9am-5pm	All ages Developmentally Disabled	No Fee	Nassau & Suffolk Counties Short Term service coordination for DD individuals who do not have Medicaid Spanish Speakers Available	Doris Yeboah (516) 292-6449 x. 121 <a href="mailto:dyeboah@rapidrecovery.org">dyeboah@rapidrecovery.org</a>



# NON-MEDICAID SERVICE COORDINATION

AGENCY	LOCATION	SERVICE HOURS	POPULATION SERVED	FEE	COMMENTS	CONTACT PERSON
Cody Center for Autism and Developmentally Disabilities	S.U.N.Y. Stony Brook 177 Putnam Hall Room 100A South Campus Stony Brook	Mon.-Fri. 9am – 5pm	Families of children, adolescents and adults with developmental disorders	No Fee	Suffolk County Only	Giuseppa Licata (631) 444-7307 <a href="mailto:giuseppa.licata@stonybrookmedicine.edu">giuseppa.licata@stonybrookmedicine.edu</a>
East End Disability Association (EEDA)	107 Roanoke Avenue Riverhead	Mon.-Fri. 9am – 5pm	Children & Adults Developmentally Disabled	No Fee	Serves Individuals East of William Floyd Parkway	Michaleen Anderson (631) 369-7345 x115
Economic Opportunity Council (EOC)	320 Carlton Avenue Suite 7800 Central Islip	Mon.-Fri. 9am – 5pm	Children & Adults Developmentally Disabled	No Fee	Suffolk & Nassau Counties	Simone Holder (631) 666-6471 x.602 <a href="mailto:sholder@eoc-suffolk.com">sholder@eoc-suffolk.com</a>
Head Injury Association (HIA)	300 Kennedy Drive Hauppauge	Mon.-Fri. 9am – 5pm	All ages, TBI & DD	No Fee	Nassau & Suffolk Counties Short term case management	Kristi Marcus (631) 543-2245 x 7485 <a href="mailto:kmarcus@headinjuryassoc.org">kmarcus@headinjuryassoc.org</a>
Hispanic Counseling Center	344 Fulton Ave. Hempstead, NY 11550	Mon.-Fri. 9am – 5pm	Ages: 4 years – Adults, Hispanic Developmentally Disabled population	No Fee.	Nassau & Western Suffolk Counties	Janet Torres (516) 538-2613 <a href="mailto:mschcc@aol.com">mschcc@aol.com</a>
Innovative Resources for Independence (IRI)	191 Bethpage-Sweet Hollow Road Old Bethpage	Mon.-Fri. 9am – 5pm	Children & Adults Developmentally Disabled	No Fee	Nassau County	Tim Coleman (646) 294-0544 <a href="mailto:tcoleman@in-res.org">tcoleman@in-res.org</a> Yvellisse Rosa (646) 533-8254 <a href="mailto:yrosa@in-res.org">yrosa@in-res.org</a>
Kulanu	620 Central Avenue Cedarhurst	Mon. – Thurs. 9am – 6pm Fridays 9am – 2pm Additional hours by appointment	Individuals with Developmental Disabilities, Autism Spectrum Disorders	No Fee	Nassau County	Amy Eisenberg (516) 569-3083 x.138 <a href="mailto:amy@kulanukids.org">amy@kulanukids.org</a>



# NON-MEDICAID SERVICE COORDINATION

AGENCY	LOCATION	SERVICE HOURS	POPULATION SERVED	FEE	COMMENTS	CONTACT PERSON
Long Island Advocacy Center	490 Wheeler Road Hauppauge	Mon.-Fri. 9am – 5pm	Children & Adults With Developmental Disabilities and their families	No Fee	Nassau & Suffolk	Carolyn Roth (631) 234-0467 x. 18 <a href="mailto:croth@theliac.org">croth@theliac.org</a>
Mill Neck Services for Deaf Adults	P.O. Box 193 Frost Mill Road Mill Neck	Mon.-Fri. 8am – 4pm	Deaf, Developmentally Disabled adults	No Fee	Nassau & Suffolk Counties	Loretta Murray (516) 922-3818 <a href="mailto:deafmns@aol.com">deafmns@aol.com</a>
SCO Family of Services	164 3 <sup>rd</sup> Avenue Brentwood	Mon.-Fri. 9am – 5pm	Children & Adults Developmentally Disabled	No Fee	Nassau & Western Suffolk Counties Short term service coordination for individuals with Development Disabilities who are not Medicaid eligible	Sherry LeWinter (631) 273-2773 x. 110 <a href="mailto:slewinter@sco.org">slewinter@sco.org</a>
United Cerebral Palsy Association of Greater Suffolk County, Inc. (UCP of Suffolk)	250 Marcus Blvd. Hauppauge	Mon-Thurs 8:30am- 7pm	Children & Adults Developmental Disabilities	No Fee	Suffolk County Only Service Coordination and Support	Michele Kuhl (631) 232-0011 x416
YAI – National Institute for People with Disabilities (YAI)	555 Washington Ave, Suite 1 Brentwood	Mon-Fri 8:30 am – 5 pm	Children & Adults Autism	No fee	Nassau & Suffolk Counties Short term service coordination	Melissa White (631) 967-7106 <a href="mailto:melissa.white@yai.org">melissa.white@yai.org</a> Simja Bezalel (516) 742-9549