

New York State Office for People with Developmental
Disabilities

Family Support Services Grant Programs

Respite, Family Training, Advocacy, Counseling & Support Services,
Crisis Intervention, Voucher Reimbursement, Senior Day Programs,
Recreation, Non-Medicaid Service Coordination

Long Island Developmental Disabilities Service Office
415A Oser Avenue
Hauppauge, NY 11788
(631) 434-6000
<http://www.opwdd.ny.gov>

The grant list is available on line at www.lifssac.com

Revised: January 2017

TABLE OF CONTENTS

| <u>CATEGORY</u> | <u>PG. NUMBERS</u> |
|---|---------------------------|
| Introduction | 1 |
| After School/Respite Programs | 2-5 |
| School Vacation Respite | 6-8 |
| Crisis Intervention | 9-11 |
| Family Counseling, Training & Advocacy | 12-14 |
| Parent Training for D.D. Parents | 15 |
| In-Home Respite | 16-17 |
| Overnight Freestanding Respite | 18-19 |
| Weekend & Recreation Respite | 20-27 |
| Sibling Support | 28 |
| Town Recreation | 29-30 |
| Voucher Reimbursement | 31-32 |
| Non-Medicaid Service Coordination | 33-35 |



INTRODUCTION

This is a comprehensive listing of all Family Support Grants in Nassau and Suffolk Counties. Services are funded by the New York State Office for People with Developmental Disabilities (OPWDD) through the local Long Island Developmental Disabilities Services Office (L.I.D.D.S.O.). The programs help developmentally disabled Long Islanders and their families.

Developmental Disabilities include mental retardation, neurological impairment, epilepsy, cerebral palsy and autism. Participating individuals must meet the OPWDD eligibility criteria. Eligibility information is available on the OPWDD website under General Information & Publications/Forms.

THE FOLLOWING IS A BRIEF DESCRIPTION OF THE SERVICES THAT ARE PROVIDED:

After School/Respite Program & School Vacation Respite: Provides services to developmentally disabled children or adults for several hours up to 5 days a week.

Crisis Intervention: Services include behavioral assessment and intervention; training of families; linkage and referral; emergency in-home and out-of-home respite.

Parent Training for DD Parents: Provides parent skills and training for parents with developmental disabilities.

Family Counseling, Training & Advocacy: Provides counseling, training, behavior management and advocacy services for the family and the developmentally disabled person, at the agency site or in the home.

In-Home Respite: Matches trained respite workers with families to provide scheduled care for individuals with developmental disabilities in their homes.

Overnight Freestanding Respite: Scheduled respite in certified agency operated respite homes, weekends or weekdays.

Respite Recreation: Provides care through recreation and social activities at various agencies in Nassau and Suffolk Counties.

Senior Day Programs: Social recreational day programs offered to seniors 45 years and up.

Sibling Support: Provides services to siblings through support groups, individual counseling or recreational activities.

Town Recreation: Provides recreation and social activities to town residents with developmental disabilities.

Voucher/Reimbursement: Families are reimbursed for purchased goods or services for their developmentally disabled person which cannot be funded through other resources. Services in the grant are not reimbursable.

Non-Medicaid Service Coordination: Short term service coordination to assist developmentally disabled individuals with the planning for and accessing of desired services and supports.



AFTER SCHOOL RESPITE PROGRAMS

| AGENCY | LOCATION | SERVICE HOURS | POPULATION SERVED | FEE | COMMENTS | CONTACT PERSON |
|--|---|--|---|-----------|---|--|
| A-1 Universal Care, Inc. | Park Avenue School 100 E Park Avenue Westbury | Tuesdays, Wednesdays, & Fridays 3pm-6pm | Ages: 5-22 years Developmentally Disabled | No Fee | Nassau County | Donna Harris (516) 338-8777 x12 dwalker@a1universalcare.org |
| Association for Children with Down Syndrome (ACDS) | 4 Fern Place Plainview | Wednesdays 4:30pm-7pm | Ages: 5 years & up Down Syndrome & Developmentally Disabled | No Fee | Nassau & Suffolk Counties Dance Class – Ballet, tap, jazz and modern techniques | Erica Lepurage (516) 605-2391 elepuration@acds.org Brian Laubis (516) 605-2391 |
| Association for Children with Down Syndrome (ACDS) | 4 Fern Place Plainview | Thursdays 5:30pm - 8:30pm | Ages: 15 years & up Down Syndrome & Developmentally Disabled Teen program | Fee | Nassau & Suffolk Counties Mix of sessions in the community and at ACDS. | Erica Lepurage (516) 605-2391 elepuration@acds.org Brian Laubis (516) 605-2391 |
| Association for Children with Down Syndrome (ACDS) | 4 Fern Place Plainview | Mondays 5:30-8pm Fall & Spring | Ages: 11-15 years Developmentally Disabled children | No Fee | Nassau & Suffolk Counties The tween socialization program offers age appropriate activities in ACDS teen lounge, gym and Karaoke Café. | Erica Lepurage (516) 605-2391 elepuration@acds.org Brian Laubis (516) 605-2391 |



AFTER SCHOOL RESPITE PROGRAMS

| AGENCY | LOCATION | SERVICE HOURS | POPULATION SERVED | FEE | COMMENTS | CONTACT PERSON |
|--|---|--|---|-------------------------------------|--|---|
| Adults & Children with Learning Disabilities (ACLD) | Bethpage Day Service Center 807 S. Oyster Bay Bethpage Respite | Thursdays & Fridays 3:30 – 7:30pm Saturdays & Sundays 10am-4:15pm | Ages: 21 years & up Developmentally Disabled | No Fee | Nassau & Suffolk Counties | Stellie Louis (631) 822-0028 x.358 louiss@acld.org |
| Adults & Children with Learning Disabilities (ACLD) | 67 Greenwood Road Or 200 West Main Street Bay Shore | Mon.-Fri. 2:30 pm – 5:45 pm | Ages: 5–21 years Developmentally Disabled | Coordinated through school district | Nassau & Suffolk Counties Transportation via school district Therapeutic Recreation | Linda Eisen (631) 647-9577 x350 eisenl@acld.org |
| Bellport Area Community Action Committee, Inc. (BACAC) | Frank P. Long School Brookhaven Ave. Bellport | Mon.-Fri. 3pm-6pm | Ages: 5-12 years Developmentally Disabled | No Fee | South Country School District Only | Yolanda Lucas (631) 665-19 x350 |
| Developmental Disabilities Institute (DDI) | 75 Landing Meadow Road Smithtown | Monday, Wednesday & Friday 4pm – 7pm | Ages: 18 years & up Developmentally Disabled | No Fee | Must provide own transportation. Must be waiver enrolled. | Arilys Fils-Aime (631) 870-6026 |
| East End Disability Associates, Inc. (EEDA) | West Hampton Beach BOCES 215 Old Riverhead Rd West Hampton | Mon.-Fri. 2:30pm-5:30pm | Ages: 5-21 years Developmentally Disabled | No Fee | Suffolk County - East of William Floyd Parkway Transportation via school district Therapeutic Recreation | Shoshannah Jacobs (631) 369-7345 x.207 shoshannahj@eed-a.org |
| East End Special Players | Bridge Hampton Senior Center 585 Sag Harbor Turnpike Bridge Hampton | Thursdays 4pm – 7:30pm | Adults Developmentally Disabled | No Fee | Explore different arts such as sculpture, painting, dance and cooking. No transportation. Not Bilingual. Wheelchair Assessable | Paul Rogers 631-726-447 Jacqui Leader 631-678-75760 |
| Economic Opportunity Council (EOC) | 320 Carlton Avenue Suite 7800 Central Islip | Mondays 2-6pm | Ages: 21 years & up Developmentally Disabled | No Fee | Suffolk Counties Transportation provided | Simone Holder (631) 666-6471 x.602 sholder@eoc-suffolk.com |



AFTER SCHOOL RESPITE PROGRAMS

| AGENCY | LOCATION | SERVICE HOURS | POPULATION SERVED | FEE | COMMENTS | CONTACT PERSON |
|--|--|---|--|--------------------|---|--|
| Family Counseling Services | West Hampton Beach | Social Skills Fall/Winter Mon 6-7pm Recreations/Respite 2 Sun per month 10:30 – 12pm | Ages: 5-15 years Autism Spectrum Disorders | Sliding Scale | Education, advocacy, resource & referral, counseling & parent support | Barbara Silverstein (631) 288-1954 x. 233 bsilverstein@fsl-li.org |
| Family Residences & Essential Enterprises, Inc. (FREE) | 28 Research Way East Setauket | Mon.-Fri. Afternoons 2:00pm – 5pm | Ages: 12 years & up Developmentally Disabled | No Fee | Suffolk County Only Transportation on limited basis | Amanda Baker (631) 689-2525 x.2544 abaker@familyres.org |
| Family Residences & Essential Enterprises, Inc. (FREE) | 120 Plant Avenue Hauppauge | Mon.-Fri. Afternoons 2:00pm – 5pm | Ages: 12 years & up Developmentally Disabled | No Fee | Suffolk County Only Transportation on limited basis | Amanda Baker (631) 689-2525 x.2544 abaker@familyres.org |
| Friedberg Jewish Community Center | 15 Neil Court Oceanside | After School Weekdays 3pm – 6pm & Sundays | Teens on the Autism Spectrum, or with other Developmental Disabilities | No Fee | After school enrichment clubs, Sunday social clubs, life-skills workshop Vacation Respite | Marcy Hallerman (516) 634-4173 mhallerman@friedbergicc.org |
| Eden II/Genesis | 270 Washington Ave. Plainview | Mondays & Thursdays 3pm-5pm | Ages: 5-21 years Autism | \$15 per day | Nassau & Suffolk Counties | Jillian Panni 516-937-1397 x.511 jpanni@eden2.org |
| Little Flower Children & Family Services | 2450 N. Wading River Road Wading River | Day & Evening | Ages: 4 to 14 years Developmentally Disabled | Sliding Scale | Nassau & Suffolk Counties | Judy Feller (631) 929-6200 x.1546 fellerj@lfchild.org |
| Mill Neck Services | 501 S. Broadway Hicksville | Thursdays 6-8:30pm | Deaf & Developmentally Disabled | No Fee | Nassau & Suffolk Counties | Loretta Murray (516) 922-3818 deafesq@millneck.org |



AFTER SCHOOL RESPITE PROGRAMS

| AGENCY | LOCATION | SERVICE HOURS | POPULATION SERVED | FEE | COMMENTS | CONTACT PERSON |
|--|----------------------------------|---|---|--------------------|--|---|
| SCO Family of Services Drop-in-Lounge | 117 Comac Road Ronkonkoma | Thursdays 6-9 pm | Ages: 21 years & up Developmentally Disabled adults living at home | \$2 per week | Nassau & Suffolk Counties Closed on legal holidays Wheelchair accessible | Peggy Telesca (631) 273-2773 x.203 ptelesca@sco.org Donna Delarosa (631) 273-2773 x.235 ddelarosa@sco.org |
| Sid Jacobson Jewish Community Center | 300 Forest Drive East Hills | Mon. - Fri. 3:15pm-5:15pm | Ages: 5-21 years Developmentally Disabled and Autistic Children | No Fee | Nassau & Suffolk Counties Closed on school holidays & vacations. Follows Roslyn school calendar Wheelchair Accessible | Stacy Denison (516) 484-1545 x178 sdenison@sjjcc.org |
| United Cerebral Palsy Association of Greater Suffolk County (UCP of Suffolk) | 250 Marcus Blvd. Hauppauge | Mondays & Wednesdays 3:30pm-6:00pm | Developmentally Disabled Adults | No Fee | Suffolk County Only Adapted Creative Arts | Monica Kuzdro (631) 232-0011 x. 608 mkuzdro@ucp-suffolk.org |
| United Cerebral Palsy Association of Greater Suffolk County (UCP of Suffolk) | 250 Marcus Blvd. Hauppauge | 3:00pm-6pm two days a week | Developmentally Disabled 18+ | No Fee | Suffolk County Only Athletic Program Sometimes school transportation to program available | Monica Kuzdro (631) 232-0011 x. 608 mkuzdro@ucp-suffolk.org |
| YAI -National Institute for People w/Disabilities (YAI/NIPD) | 555 Washington Ave. Brentwood | Mon-Fri. 2:30pm-5:30 pm | Ages: 13-21 years Developmentally Disabled | Donation Requested | Nassau & Suffolk Counties No transportation. This program provides supervision and appropriate leisure and recreational activities | Colleen Ryan (631) 858-9377 x311 (631) 967-7121 colleen.ryan@yai.org |
| YAI -National Institute for People w/Disabilities (YAI/NIPD) | 555 Washington Ave. Brentwood | Tuesdays & Fridays 5:30pm – 9:30pm 1-2 Saturdays per year 10am – 5pm | Adults Autism Spectrum and/or Mild Developmental Disability | No Fee | Serves Nassau & Suffolk Counties Wheelchair Accessible Capable of participating in activities with a one to five staff | Colleen Ryan (631) 967-7121 Colleen.ryan@yai.org Pamela Wolff Pamela.wolff@yai.org (631)423-0460 |



SCHOOL VACATION RESPITE

| AGENCY | LOCATION | SERVICE HOURS | POPULATION SERVED | FEE | COMMENTS | CONTACT PERSON |
|---|--|--|---|-------------|---|--|
| Association for Children with Down Syndrome (ACDS) | 4 Fern Place Plainview | February, Spring and Christmas Breaks | Ages: 5-15 years Down Syndrome and other Developmental Disabilities | Minimal Fee | Nassau & Suffolk Counties No transportation provided | Brian Laubis (516) 605-2391 |
| Adults & Children w/Learning & Developmental Disabilities (ACLD) | Great South Bay YMCA 200 W. Main St. Bay Shore | Mon.-Fri. 9am-4pm 6 week session – end of June – early August | Ages: 15-17 years Developmentally Disabled | \$300 | Nassau & Suffolk Counties Counselor in Training Day Camp experience Parents provide transportation | Linda Eisen (631) 647-9577 x350 eisenl@acld.org |
| Adults & Children with Learning & Developmental Disabilities (ACLD) | Great South Bay YMCA 200 W. Main Street Bay Shore | Mon.-Fri 9am-4pm 3 week session June/July or July/August | Ages: 5-12 years Developmentally Disabled | \$150 | Nassau & Suffolk Counties Summer Day Camp experience. Parents Provide transportation | Linda Eisen (631) 647-9577 x350 eisenl@acld.org |
| Adults & Children with Learning & Developmental Disabilities (ACLD) | Great South Bay YMCA 200 W. Main St. Bay Shore | School Vacations Select Days 9am – 4pm | Ages 5-12 years Developmentally Disabled Children | \$60 | Nassau & Suffolk Counties Day Camp Experience Parents provide transportation | Linda Eisen (631) 647-9577 x350 eisenl@acld.org |
| Adults & Children with Learning & Development Disabilities (ACLD) | Y-JCC Hauppauge Rd. Commack | Feb/Apr School Vacation 9am-3pm Select Days | Ages 5-12 years Developmentally Disabled Children | \$60 | Nassau & Suffolk Counties Day Camp Experience Parents provide transportation | Linda Eisen (631) 647-9577 x350 eisenl@acld.org |
| Bais Ezra | 129 Elmwood Ave Brooklyn | Mon.-Thus. 10am -3:30pm Friday – 10am – 1:30pm | Ages: 5-21 years Developmentally Disabled & Autistic | \$400 | Nassau County Includes transportation Programs runs for 8 days at the end of August in Catskills | Ilana Katz (718) 686-3489 ilana_katz@ohelfamily.org |



SCHOOL VACATION RESPITE

| AGENCY | LOCATION | SERVICE HOURS | POPULATION SERVED | FEE | COMMENTS | CONTACT PERSON |
|--|---|---|--|------------------------------|---|---|
| Brookville Center for Children's Services | 189 Wheatley Rd. Brookville | Christmas/winter break, Easter/Passover break, & 1 week in August 10am-3pm | Ages: 3-21 years Developmentally Disabled children | \$200 per session | Nassau & Suffolk Counties Respite during school holidays Wheelchair Accessible | Barbara Huber (516) 626-1000 x.3353 bhuber@brookvillecenter.org |
| Developmental Disabilities Institute (DDI) | 90 Air Park Drive Ronkonkoma | Tuesdays & Thursdays 2:30 – 5:30pm School holiday 10am-2pm | Ages: 3 to 7 years | No fee | Nassau & Suffolk Counties Project "SOAR"- No transportation Only able to serve those without Medicaid Reimbursement available | Christine Racca (631) 580-4046 cracca@ddiinfo.org Jennifer Swenning (631) 580-4007 |
| East End Disability Association (EEDA) | Site rotates throughout Eastern Suffolk | Mon.-Fri. | Ages: 5-21 years Developmentally Disabled | Donation of \$10 per day | Program runs during school vacations (except Christmas) | Christine Proietti (631) 369-7345 x.121 christineq@eed-a.org Shoshannah Jacobs shoshannahj@eed-a.org |
| Family Residences & Essential Enterprises, Inc. (FREE) | 191 Sweet Hollow Road Old Bethpage | Mon-Fri. 9am-4pm During school vacations breaks; Presidents Week, Spring Break, Winter Break, and 3 weeks during the Summer | Ages: 5-21 years Children with Autism and other Developmental Disabilities | Small activity fee may apply | Nassau & Suffolk Counties Transportation not included from site to site Transportation included for all outings off site Must provide lunch Wheelchair accessible | Caitlin Eamotte (631) 689-2525 x2544 ceamotte01@familyres.org |
| Eden II/Genesis | 270 Washington Ave. Plainview | Mon.-Fri. 9am-3pm Last week of June & August | Ages: 5-21 years Children with Autism | \$40 per day | Nassau & Suffolk Counties Applications available beginning in May | Jillian Panni 516-937-1397 x.511 jpanni@eden2.org |
| Eden II/Genesis | 270 Washington Ave. Plainview | 8 overnight trips per year Fridays – Sundays | Ages: 5 and up Individuals with Autism | \$100 | Nassau & Suffolk Counties 5 people per trip Transportation is not included | Jillian Panni 516-937-1397 x.511 jpanni@eden2.org |



SCHOOL VACATION RESPITE

| AGENCY | LOCATION | SERVICE HOURS | POPULATION SERVED | FEE | COMMENTS | CONTACT PERSON |
|--|-------------------------------------|---|---|-----------------------|---|---|
| Eden II/Genesis | 270 Washington Ave. Plainview | Day Trips All Holiday breaks 9am – 3pm | Ages: 5-21years Individuals with Autism | \$30 per day | Nassau & Suffolk Counties | Jillian Panni 516-937-1397 x.511 jpanni@eden2.org |
| Horseability, Inc. | 238 Round Swamp Road Melville | Summer Camp 9am – 3:30pm Mon.-Fri. 1 week in August | Ages: 3 years & up Developmentally Disabled | Camp Fee: \$700 | Nassau & Suffolk Counties Wheelchair Accessible Scholarship Available | Jamie Thomas Martin (516) 333-6151 x.111 jamie@horseability.org |
| Mid-Island Y Jewish Community Center | 45 Manetto Hill Rd. Plainview | School Vacation Days 10am – 3:30pm | Children, Teens & Young Adults Autism Spectrum Disorder | Sliding Scale | Nassau & Suffolk Counties Program includes arts & crafts, swimming, music, sports, & inclusion opportunities | Sharon Hanover (516) 822-3535 x.332 shanover@miyjcc.org |
| Nassau/Suffolk Services for the Autistic (NSSA) | 80 Hauppauge Road Commack | June 27 th – July 1 st Mon.-Fri. 9:30 – 3:30 pm | Ages: 5-21 years Individuals with Autism | \$125 | Nassau & Suffolk Counties Summer Camp Program | Jason Watson (631) 462-0386 x.201 tmanziona@nssa.net |
| Sid Jacobson Jewish Community Center | 300 Forrest Drive East Hills | Last week of August 10am – 4pm | Ages:5-22 years Developmentally Disabled | No Fee | Post Summer Camp Program | Stacy Denison (516) 484-1545 x178 sdenison@sjjcc.org |
| Variety Child Learning Center | 47 Humphrey Drive Syosset | 10am – 2pm School Vacations | Ages: 3 – 10 years Developmentally Disabled Children with Behavioral Challenges | No Fee | No transportation or Lunch Provided | Rebecca Esquillin (516)921-7171 x. 2104 resquillin@vclc.org |



CRISIS INTERVENTION

| AGENCY | LOCATION | SERVICE HOURS | POPULATION SERVED | FEE | COMMENTS | CONTACT PERSON |
|---|--|---------------------------------|---|-----------|--|---|
| Angela's House NMSC Crisis | P.O. Box 5052 Hauppauge | Monday – Friday 9am – 5pm | Medically Frail, Technology Dependent, Chronically Ill and Developmentally Disabled 18 years or younger | No Fee | Must have OPWDD eligibility. We do not provide the respite ONLY the funding for an emergency situation. | Colleen Kunkel 631-761-0128 ckunkel@angelashouse.org |
| Angela's House | P.O. Box 5052 Hauppauge | Individually scheduled | Medically Frail, Technology Dependent, Chronically Ill and Developmentally Disabled 18 years or younger | No Fee | Nassau and Suffolk | Colleen Kunkel 631-761-0128 ckunkel@angelashouse.org |
| East End Disability Associates (EEDA) | 729A Route 25A Rocky Point NY | 24 hours a day 7 days a week | Ages: 7 and up Developmentally Disabled | No Fee | Suffolk County Not wheelchair accessible | Mobile Crisis: Hotline (631) 369-2585 Crisis House: Kim Murphy (631) 849-5582 Kimm@eed-a.org |
| Family Residences & Essential Enterprises, Inc. (FREE) | 7 Dogwood Lane Westbury, NY 11590 | 24 hours a day 7 days a week | Ages: 16 years & up Developmentally Disabled | No Fee | Nassau & Suffolk Counties | Katrina Richardson (631) 273-1300 x.3581 krichardson@familyres.org Astrido St. Surin x. 3462 astsurin@familyres.org Nicky Faranda x.3539 nfaranda@familyres.org Hotline – (631)476-2068 |
| Family Residences & Essential Enterprises, Inc. (FREE) | 25 Wood Road Centereach Crisis House | 24 hours a day 7 days a week | Ages: 16 years & up Developmentally Disabled | No Fee | Nassau & Suffolk Counties | Katrina Richardson (631) 273-1300 x.3581 krichardson@familyres.org Astrido St. Surin x. 3462 astsurin@familyres.org Nicky Faranda x.3539 nfaranda@familyres.org Hotline – (631)476-2068 |



CRISIS INTERVENTION

| AGENCY | LOCATION | SERVICE HOURS | POPULATION SERVED | FEE | COMMENTS | CONTACT PERSON |
|--|-------------------------------|---------------------------------|---|--------|---|--|
| Family Residences & Essential Enterprises, Inc. (FREE) | 120 Plant Avenue Hauppauge | 24 hours a day 7 days a week | Ages: 5 years & up Developmentally Disabled and their families | No Fee | Nassau and Suffolk County area. Mobile Crisis Intervention aims to reduce the intensity of an individual's emotional, mental, physical and behavioral reactions to a crisis; to help individuals return to their level of functioning before the crisis and to assist the family unit to maintain a stable environment within the home. | Katrina Richardson (631) 273-1300 x.3581 krichardson@familyres.org Astrido St. Surin x. 3462 astsurin@familyres.org Nicky Faranda x.3539 nfaranda@familyres.org Hotline - (631)476-2068 |
| Family Residences & Essential Enterprises, Inc. (FREE) | 12 Old East Neck Rd. Melville | 24 hours a day 7 days a week | Ages: 16 years & up Developmentally Disabled | No Fee | Nassau & Suffolk Counties Ambulatory | Katrina Richardson (631) 273-1300 x.3581 krichardson@familyres.org Astrido St. Surin x. 3462 astsurin@familyres.org Nicky Faranda x.3539 nfaranda@familyres.org Hotline - (631)476-2068 |
| Family Residences & Essential Enterprises, Inc. (FREE) | 120 Plant Avenue Hauppauge | 24 hours a day 7 days a week | Ages: 5 years and up Developmentally Disabled and their families | No Fee | Nassau & Suffolk Counties Crisis intervention aims to reduce the intensity of an individual's emotional, mental, physical and behavioral reactions to a crisis; to help individuals return to their level of functioning before the crisis, and assist the family unit to maintain a stable environment within the home | Katrina Richardson (631) 273-1300 x.3581 krichardson@familyres.org Astrido St. Surin x. 3462 astsurin@familyres.org Nicky Faranda x.3539 nfaranda@familyres.org Hotline - (631)476-2068 24 hour crisis beeper/hotline: (631)476-2068 |



CRISIS INTERVENTION

| AGENCY | LOCATION | SERVICE HOURS | POPULATION SERVED | FEE | COMMENTS | CONTACT PERSON |
|---|--|-------------------------------|---|---|--|--|
| Eden II/Genesis | 270 Washington Avenue Plainview | As Needed | Ages: 5-21 years Children with Autism | No Fee | Nassau & Suffolk Counties Crisis respite & behavioral management Parent Training | Jillian Panni 516-937-1397 x.511 jpanni@eden2.org |
| Human First, Inc. | 128 Atlantic Avenue Lynbrook | 365 days a year 4pm – 11pm | Children and Adults with Developmental Disabilities | No Fee | Nassau & Suffolk Counties | Dr. Nicole Apello (347) 831-6989 Sue Sabarra (347) 263-4451 Hotline – (888) 224-7331 |
| Independent Group Home Living, Inc. (IGHL) | 356 South Sunrise Service Road Center Moriches | 24 hrs a day 7 days a week | Ages: 3 years and up Developmentally Disabled | No Fee | Nassau & Suffolk Counties | Tracey DelDuca (631) 878-0636 tdelduca@ighl.org Michelle DiGiantomasso (631) 878-0636 |
| Independence Residences, Inc. (IRI) | 93-22 Jamaica Av. 2 nd floor Woodhaven | Day-Eve | Ages: 15 years & up Developmentally Disabled, Autistic and those with challenging behaviors | No Fee | Nassau County Only Will provide emergency respite services | Timothy Coleman (718) 805-6796 x.113 (646) 294-0544 tcoleman@in-res.org Estefania Tineo (917) 717-1325 |
| Stony Brook Child and Adolescent Outpatient Clinic (formerly Cody Center) | Office and in Home Services Towns of Huntington, Brookhaven, Islip, Babylon, Smithtown | Individually Scheduled | Ages 5-14 years Autism Spectrum Disorder | No Fee for assessment \$25 per week for behavioral intervention & training | Behavioral assessment, intervention, parent training for families of children with Autism who display challenging behaviors at home | Dr. Pail Mitriani (631) 632-9578 Naomi Angoff-Chedd (631) 632-3715 |



FAMILY COUNSELING, TRAINING & ADVOCACY

| AGENCY | LOCATION | SERVICE HOURS | POPULATION SERVED | FEE | COMMENTS | CONTACT PERSON |
|--|--------------------------------|------------------------|---|--------|---|--|
| Angela's House | P.O. Box 5052 Hauppauge | Day & Evening | Medically frail, chronically ill, technology dependent and developmentally disabled | No Fee | Nassau & Suffolk Counties | Colleen Kunkel 631-761-0128 ckunkel@angelashouse.org |
| Center for Rapid Recovery (CRR) | 312 Greenwich St. Hempstead | Mon.-Fri. 9am-5pm | Families with Developmentally Disabled children and adults. Multicultural families | No Fee | Nassau & Suffolk Counties Bilingual public awareness information, advocacy, and referral | Doris Yeboah (516) 292-6449 x.121 dyeboah@rapidrecovery.org Andrea Newalis (516) 292-6449 x.106 anewalis@rapidrecovery.org |
| Developmental Disabilities Institute (DDI) | Various Locations | Individually scheduled | Adults & children with developmental disabilities and their families | No Fee | Nassau & Suffolk Counties Program provides short-term behavioral consultation and parent training to families who have children diagnosed with developmental disability that reside at home and exhibit serious challenging behaviors | Carlene Fallica (631) 360-4634 c.fallica@ddiinfo.org |
| Down Syndrome Advocacy Foundation | P.O. Box 12173 Hauppauge | As needed | Family members of individuals with Down Syndrome and other Developmental Disabilities | No Fee | Nassau & Suffolk Counties Parent training and workshop Yearly conference on Best Practices in the education of children with Down Syndrome Limited Scholarships available to parents of children with Down Syndrome | Susan Antonio (516) 983-7008 |
| East End Disability Associates (EEDA) | Location varies by service | As scheduled | Intellectually disabled adults and family | No Fee | East Suffolk Long Island East of William Floyd Parkway | Joy O'Shaughnessy (631) 369-7345 x208 |



FAMILY COUNSELING, TRAINING & ADVOCACY

| AGENCY | LOCATION | SERVICE HOURS | POPULATION SERVED | FEE | COMMENTS | CONTACT PERSON |
|--|---|---------------------------------------|---|---------------------------|---|--|
| Family Residences & Essential Enterprises, Inc. (FREE) | 191 Sweet Hollow Rd. Old Bethpage | Day & Evening | All Ages Prader-Willi Syndrome | No Fee | Nassau & Suffolk Counties In home intervention, parent & family counseling and training | Astrido St. Surin (631) 273-1300 x 3520 astsurin@familyres.org Katrina Richardson (631) 273-1300 Nicky Faranda x.3539 nfaranda@familyres.org |
| Head Injury Association, Inc. (HIA) | 300 Kennedy Drive Hauppauge | Mon.-Fri. 9am-5pm | Families & survivors w/ head injuries | No Fee | Nassau and Suffolk Counties Info. & referral regarding all aspects of traumatic brain injury and services offered through OPWDD. Periodic group training/informal sessions offered | Kristie Marcus (631) 543-7485 kmarcus@headinjuryassoc.org |
| Long Island Advocacy Center | 999 Herricks Road, Rm 108 New Hyde Park | Monday – Friday 9am – 5pm | 17 years & up Developmentally Disabled and their families | No Fee | Nassau & Suffolk Counties Benefits advisement & supports for OPWDD eligibility. | Barbara Morell 516-248-2222 x22 bmorell@theliac.org |
| North Shore Child & Family Guidance Center | 480 Old Westbury Road Roslyn Heights | Mon.-Fri. 9am-5pm Some evenings | Developmentally Disabled children & their families, parent, & siblings support groups | No Fee for support groups | Also offers grandparent support group | Elizabeth Goulding Tag (516) 802-4018 |
| Parent to Parent of NYS, Inc | 415A Oser Avenue Hauppauge | Mon.-Fri. 9am- 5pm | All ages All disabilities | No Fee | We provide 1:1 parent support and assistance in accessing services, parent matching, educational advocacy, workshops and trainings, e-groups and a comprehensive website with online families | Valerie Colavecchio-Reid vreid@ptopnys.org Alissa Morris amorris@ptopnys.org (631) 434-6196 1-800-559-1729 |



FAMILY COUNSELING, TRAINING & ADVOCACY

| AGENCY | LOCATION | SERVICE HOURS | POPULATION SERVED | FEE | COMMENTS | CONTACT PERSON |
|--------------------------------|---------------------------------|---------------------------------------|--|---|--|---|
| New Horizons Counseling Center | 50 West Hawthorne Valley Stream | Mon.-Fri. 9am-5pm Some evenings | Developmentally Disabled individuals and their families Parent & sibling support groups | Sliding Scale for Individual Counseling No fee for | Nassau & Suffolk Counties Individual & family counseling & family support. Sibling support groups, linkage & referral | Peggy Grosman (516) 569-6600 pgrosman@nhcc.org |



PARENT TRAINING FOR DEVELOPMENTALLY DISABLED PARENTS

Page 15

| AGENCY | LOCATION | SERVICE HOURS | POPULATION SERVED | FEE | COMMENTS | CONTACT PERSON |
|-----------------------------|------------------------------------|----------------------|--|--------|---|--|
| Long Island Advocacy Center | 999 Herricks Rd., New Hyde Park | Mon.-Fri. 9am-5pm | Parents with developmental disabilities and their children | No Fee | Empowering Developmentally Disabled parents how to advocate with educational system | Audrey Diaz (516) 248-2222 x.10 adiaz@theliac.org |



IN-HOME RESPITE

| AGENCY | LOCATION | SERVICE HOURS | POPULATION SERVED | FEE | COMMENTS | CONTACT PERSON |
|---|--|-------------------------------------|--|--------|--|--|
| A-1 Universal Care | 400 Post Ave, Suite 302 Westbury | Days & Evening – as needed | Ages: 6-60 years Developmentally Disabled | No Fee | Nassau County Only Can serve people with 1:1 supports | Donna Harris (516) 338-8777 x 12 dharris@a1universalcare.org |
| Adults and Children with Learning & Developmental Disabilities (ACLD) | 807 S. Oyster Bay Rd Bethpage | Day & Evening 15 hours per month | All Ages Developmentally Disabled | No Fee | Nassau & Suffolk Counties | Stellie Louis 516-822-0028 x.358 louiss@aold.org |
| Bais Ezra | 3611 14 th Ave Suite 550 Brooklyn | Day & Evening | All Ages Developmentally Disabled | No Fee | Nassau County Only | Jesse Kenigsberg (718) 686-3487 Jesse_kenigsberg@ohelfamily.org |
| Haitian Americans United for Progress, Inc. (HAUP) | 221-05 Linden Blvd. Cambria Heights | 9am – 9pm | Ages: 3 years & up Developmentally Disabled | No Fee | Nassau & Suffolk Counties | Director of Programs Nyvrose Mompont-Fieurant (718) 527-3776 x.13 nmfleurant@haupinc.org John Fontus Program manager (718_527-3272 X.2 jfontus@haupinc.org |



IN-HOME RESPITE

| AGENCY | LOCATION | SERVICE HOURS | POPULATION SERVED | FEE | COMMENTS | CONTACT PERSON |
|--|---|--------------------------------------|--|------------------------|--|--|
| Helen Keller Services for the Blind | 1 Helen Keller Way Hempstead & 3855 Veterans Memorial Highway Ronkonkoma | 24 hours a day 7 days a week | Adults Developmentally Disabled | No Fee | Nassau & Suffolk Counties Trained staff provide respite services in home. | Lorraine LoCurto 516-485-1234 x.610 |
| Independent Group Home Living (IGHL) | 221 North Sunrise Service Road Manorville | Day & Evening | All Ages Developmentally Disabled | \$1 per hour per child | Eastern Suffolk County | Tracey DelDuca (631) 878-0636 tdelduca@ighl.org |
| Innovative Resources for Independence (IRI) | 93-22 Jamaica Avenue 2 nd Floor Woodhaven | As needed – 10 hours per week | All Ages Autistic | No Fee | Nassau County Only | Timothy Coleman (646) 294-0544 tcoleman@in-res.org Estefania Tineo (917) 717-1325 etineo@in-res.org |
| Nassau/Suffolk Services for the Autistic (NSSA) | The Martin C. Barell School 80 Hauppauge Road Commack | Day & Evening | Ages: 4 years & up Autistic/ Autistic Spectrum | Sliding Scale | Nassau & Suffolk Counties | Jason Watson Christen McPherson (631) 462-0386 jwatson@nssa.org cmcpherson@nssa.org |
| Quality Services for the Autism Community (QSAC) | 253 West 35 th Street 16 th floor New York, NY 10001 | Day & Evening Weekdays Weekend | Ages: 3 years & up Autistic/PDD | No Fee | Nassau County Only Ongoing & crisis, in home respite | Vicki Ramsay (718) 728-8476 x.1259 vramsay@qsac.com |
| United Cerebral Palsy Association of Greater Suffolk County, Inc. (UCP of Suffolk) | 250 Marcus Blvd. Hauppauge | Day & Evening | Ages: Birth to 21 years Developmentally Disabled | Voucher Reimbursement | Suffolk County Only | Jane Kay (631) 232-0011 x. 415 jkay@ucp-suffolk.org |



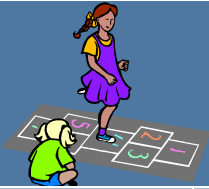
OVERNIGHT FREESTANDING RESPITE

| AGENCY | LOCATION | SERVICE HOURS | POPULATION SERVED | FEE | COMMENTS | CONTACT PERSON |
|---|--|--|--|--------|---|--|
| Association for the Help of Retarded Children of Nassau County (AHRC Nassau) (Citizen's Inc.) | 7 Fisher Lane Levittown | Scheduled as needed, overnight or weekly | Ages: 21 years & up no medical or behavioral problems requiring special supervision | No Fee | Nassau County Only Day respite is also available on weekends | Jillian Peneghetti (516) 653-0141 ahrc4420r@optonline.net |
| Association for the Help of Retarded Children of Suffolk County (AHRC Suffolk) | 1210 Portion Rd. Holtsville | 7 days a week – except major holidays | Ages: 21 years & up Independent in ADL skills, no medical or behavioral problems requiring special supervision | No Fee | Suffolk County Only Transportation only available from AHRC Day Programs in Bohemia Ambulatory | Brook Johnson-Scalese (631) 585-0100 x. 520 bjohnson@suffahrc.org |
| East End Disability Associates, Inc. (EEDA) | 32 Circle Drive Shoreham | Fri – Mon. 3 pm – 9am | Children and adults Developmentally disabled | No Fee | Nassau & Suffolk Counties | (631) 369-7345 (631) 369-2292 |
| Family Residences & Essential Enterprises, Inc (FREE) | 1363 North Jerusalem Road E. Meadow | Scheduled as needed overnight or weekly 24/7 | Ages: 8 years & up Developmentally Disabled No medical or behavioral problems requiring special supervision | No Fee | Nassau & Suffolk Counties Ambulatory | Astrido St. Surin x. 3462 astsurin@familyres.org Nicky Faranda x.3539 nfaranda@familyres.org |
| Independent Group Home Living, Inc. (IGHL) | 1350 Wm. Floyd Pkwy. Shirley | Scheduled as needed hourly (Minimum 8 hrs.) Overnight or weekly | Ages: 3 years & up Developmentally Disabled | No Fee | Nassau & Suffolk Counties Ambulatory | Tracey DelDuca (631) 878-0636 tdelduca@ighl.org House #: (631) 878-8886 |



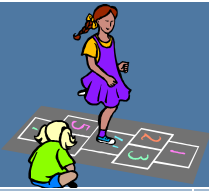
OVERNIGHT FREESTANDING RESPITE

| AGENCY | LOCATION | SERVICE HOURS | POPULATION SERVED | FEE | COMMENTS | CONTACT PERSON |
|---|--|---|--|--------|---|--|
| Independent Group Home Living, Inc. | 138 Holbrook Rd. Holbrook, NY (631) 467-1205 | Scheduled as needed hourly (Minimum 8 hrs.) overnight or weekly | Ages: 3 years & up Developmentally Disabled | No Fee | Nassau & Suffolk Counties Non-Ambulatory | Tracey DelDuca (631) 878-0636 tdelduca@ighl.org Michelle DiGrantomasso (631) 878-0636 |
| Long Island Developmental Disabilities Services Office (LIDDSO) | Melville and Center Moriches | Open weekends Friday 4pm to Sunday 4pm | All Ages Developmentally Disabled | No Fee | Nassau & Suffolk Counties Ambulatory | Regina Santo (631) 385-3125 regina.santo@opwdd.ny.gov |
| United Cerebral Palsy Association of Greater Suffolk (UCP of Suffolk) | 159 Indian Head Road Commack | Open 24 hours a day 7 days a week | Ages: 10 years & up Developmentally Disabled | No Fee | Nassau & Suffolk Counties Non-ambulatory Medically involved | Katelyn Owens (631) 543-5166 x. 286 kowens@ucp-suffolk.org |
| YAI -National Institute for People w/Disabilities (YAI/NIPD) | 211 Old South Path Melville | Open Thursday - Tuesday 3pm – 10am Open 7 days through the summer | Ages: Pre-School to Adults All Developmental Disabilities | No Fee | Nassau & Suffolk Counties One emergency bed per week | Stephen Higgins (631) 423-0460 stephen.higgins@yai.org |
| YAI -National Institute for People w/Disabilities (YAI/NIPD) | 2040 Edith Place Merrick | Friday 3pm to Sunday 5pm | All Ages All Developmental Disabilities | No Fee | Nassau County Only 5:2 staffing Wheelchair accessible | Stephen Higgins (631) 423-0460 stephen.higgins@yai.org |



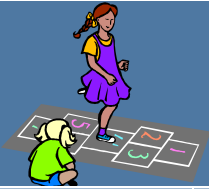
WEEKEND & RECREATION RESPITE PROGRAMS

| AGENCY | LOCATION | SERVICE HOURS | POPULATION SERVED | FEE | COMMENTS | CONTACT PERSON |
|--|---|--|---|---------------------------|---|---|
| A-1 Universal Care, Inc. | St. John's Episcopal Church Parrish Hall 536 S. Franklin St. Hempstead | Saturdays Only 10am – 3pm | Ages: 5-22 years Developmentally Disabled | No Fee | Nassau County Only | Dennis Walker (516) 338-8777 dwalker1@aluniversalcare.org |
| Association for Children with Down Syndrome (ACDS) | 4 Fern Place Plainview | Meets 2x a month on Sundays | Ages: 15-21 years Developmentally Disabled | Varies accord to activity | Nassau & Suffolk Counties ICE Program (Integrated Community Experience) | Brian Laubis (516) 605-2391 |
| Association for Children with Down Syndrome (ACDS) | 4 Fern Place Plainview | Saturdays 10am-2pm | Ages: 5 years and older | No Fee | Nassau and Suffolk Counties Arts & Crafts, music, computers, cooking | Brian Laubis (516) 605-2391 |
| Association for Children with Down Syndrome (ACDS) | 270 Washington Avenue Plainview | Friday 6:30pm – 9:30pm Jan – April | Teenage and Adults Down Syndrome & Developmentally Disabled | Fee | Nassau & Suffolk Counties Drop-in-lounge Karaoke – socialization | Brian Laubis (516) 605-2391 |
| Brookville Center for Children's Services | 189 Wheatley Rd Brookville | Saturdays 10am-3pm | Ages: 5 – 21 years Developmentally Disabled Autism spectrum | No Fee | Nassau & Suffolk Counties Wheelchair Accessible Respite Recreation Program | Pam Ali (516) 626-1075 x.3328 pali@brookvillecenter.org Marianne Klotz (516) 626-1000 x.3351 mklotz@brookvillecenter.org |
| Brookville Center for Children Services | 189 Wheatley Rd Brookville Cissy Birnbaum Building | Alternate Saturdays 9am – 1pm 2 eight session programs Sept to Dec & Feb to May | Ages: 5-18 years Autism Spectrum Disorder | No Fee | Recreation/Social Skills Program Peer mentors assist the children in social settings Activities include: playground, arts & crafts, cooking and games No transportations and must provide own lunch | Sherry Black (516) 626-1075 x.2410 sblack@brookvillecenter.org Jennifer Moore x.3327 jmoore@brookvillecenter.org Marianne Klotz x.3351 mklotz@brookvillecenter.org |



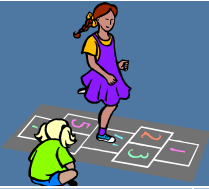
WEEKEND & RECREATION RESPITE PROGRAMS

| AGENCY | LOCATION | SERVICE HOURS | POPULATION SERVED | FEE | COMMENTS | CONTACT PERSON |
|---|---|---|---|--------------------|---|--|
| Central Nassau Guidance & Counseling Services, Inc. | Starry Night Café 459 S. Broadway Hicksville | Thur: 5-9pm Fri: 4 – 11pm Sat: 4-11pm | Ages: 18 years & up Developmentally Disabled | No fee for program | Nassau & Suffolk Counties Consumer-operated coffee house, nightclub environment catering to the creative talents of persons with disabilities Food and beverages can be purchased by patron | B. Artale (516) 396-2800 bartale@centralnassau.org Lina Vina (516) 369-2751 skaplan@centralnassau.org |
| East End Disability Associates, Inc. (EEDA) | Site rotates throughout Eastern Suffolk County based on family need | 10am-3pm 20 Saturdays a year | Ages: 5-21 years Developmentally Disabled | No Fee | Families need to provide transportation | Christine Proietti (631) 369-7345 x.121 christineq@eed-a.org |
| East End Disability Associates, Inc. (EEDA) | 784 Harrison Avenue Riverhead | 3 evenings a week 5pm – 7pm | 18 years & up Developmentally Disabled | No Fee | Suffolk County East End | Shoshannah Jacobs (631) 591-2834 shoshannahj@eed-a.org Kimberly Schiblier kimberlys@eed-a.org |
| East End Special Players | Southampton Senior Citizen's Center Bridgehampton/Sag Harbor Turnpike Southampton | Saturdays 12pm – 3:30pm | Adults Developmentally Disabled | No Fee | Other locations for theatrical program | Paul Rogers paulcra@optonline.net Hilary Jackson (631) 726-4477 |
| Economic Opportunity Council (EOC) | 320 Carlton Avenue Suite 7800 Central Islip | Saturdays 10am – 5pm | Ages: 15 years & up Developmentally Disabled | No Fee | Nassau & Suffolk Counties Transportation & Lunch provided Participants can also hire their own staff and schedule program times as needed | Simone Holder sholder@eoc-suffolk.com Cicely Hobbs (631) 666-6471 x.602 chobbs@eoc-suffolk.com |
| EPIC LI | 506 Stewart Ave. Garden City | Alternate Saturdays 10 am-3pm | Ages: 18 years & up Developmentally Disabled | No fee | Nassau & Suffolk Counties No transportation Lunch provided | Debbie-Ann Chang (516) 739-7733 x1328 dchang@epil.org |



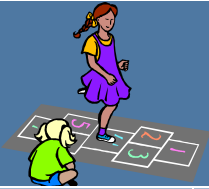
WEEKEND & RECREATION RESPITE PROGRAMS

| AGENCY | LOCATION | SERVICE HOURS | POPULATION SERVED | FEE | COMMENTS | CONTACT PERSON |
|--|--|---|--|--------------------------|---|--|
| Family Residences & Essential Enterprises, Inc. (FREE) | 28 Research Way East Setauket & 120 Plant Ave Hauppauge | Saturdays 10:30am - 1:30pm | Ages: 5 years & up Developmentally Disabled | No Fee | Suffolk County Only | Amanda Baker (631) 689-2525 x.2544 |
| Family Residences & Essential Enterprises, Inc. (FREE) | Saddle Rock Ranch 41 Coram Swezeytown Road Coram | Mon - Fri 9am - 5pm Saturday 10am - 2:30pm | Ages: 5 years and up Developmentally Disabled | \$40 per session /no fee | Nassau & Suffolk Counties - Therapeutic Riding Program/Pet Therapy | Daniel Twitchell (631) 345-0318 Dtwitchell01@familyres.org |
| Family Residences & Essential Enterprises, Inc. (FREE) | 191 Sweet Hollow Rd. Old Bethpage | Monday Evenings 6pm-9pm | 14 years & up Autism spectrum disorders and other mild Developmental Disabilities | No fee | Nassau & Suffolk Counties Fully accessible Includes open-microphone, karaoke, musical & dance performances, poetry readings, etc A selection of creative and healthy snacks and beverages provided | Sue Binder (516) 870-1667 |
| Family Residences & Essential Enterprises, Inc. (FREE) | 191 Sweet Hollow Rd. Old Bethpage | Sundays Twice a month 11am-4pm | 18 years & up Developmental Disabilities | No fee | Nassau & Suffolk Counties Program is fully accessible Includes sports, arts & crafts, musical & dance parties, photography, floral design, health & beauty classes, etc Also includes creative & healthy snacks and beverages | Sue Binder (516) 870-1667 |



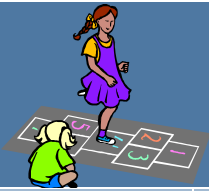
WEEKEND & RECREATION RESPITE PROGRAMS

| AGENCY | LOCATION | SERVICE HOURS | POPULATION SERVED | FEE | COMMENTS | CONTACT PERSON |
|--|--|--|---|----------------------------|---|--|
| Eden II/Genesis | The Genesis School 270 Washington Ave. Plainview | 24 trips per year 9am – 3pm | Ages: 5 and up Autism | \$40 per trip | Nassau & Suffolk Counties Wheelchair Accessible Community based recreation and leisure program Transportation is not provided | Jillian Panni 516-937-1397 x.511 jpanni@eden2.org |
| Head Injury Association (HIA) | 300 Kennedy Drive Hauppauge | Vary depending upon activity | Ages: 18 years & up Individuals with head injuries and Developmental Disabilities | No fee | Nassau & Suffolk Counties | Nancy Kritzer-Berlin (631) 543-2245 x 4014 nkberlin@lihia.org |
| Helping Hands Behavioral Outreach, Inc | 191 Sweet Hollow Rd Old Bethpage | Saturdays 10am – 3pm | Ages: 5 – 21 years Individuals with Autism and Developmental Disability | Sliding Scale | Includes art & music therapy, behavior goal planning, one to one staffing, recreational events, dance, cooking No Transportation | Brittaney Lanza (631) 659-3337 x.3 |
| Human First, Inc. | 128 Atlantic Avenue Lynbrook | Saturdays 9am – 4pm | Adults & Children Developmentally Disabled | No Fee | Transportation & lunch provided from central pick-up | Lasana Rayside (516) 823-9500 x.224 |
| Independent Group Home Living, Inc. (IGHL) | 221 North Sunrise Service Road Manorville | Saturdays 9:30am-2:30pm Sept-May | Ages: 3 years & up Developmentally Disabled | No Fee | Suffolk County Only Transportation provided & snack | Tracey DelDuca (631) 878-0636 tdelduca@ighl.org Michelle DiGiantomasso (631) 878-0636 |
| Independent Group Home Living, Inc. (IGHL) | 221 North Sunrise Service Road Manorville | Vary depending on activity | Ages: 5 years & up Developmentally Disabled | None | Suffolk County Only Community integrated activities No transportation | Tracey DelDuca (631) 878-0636 tdelduca@ighl.org Michelle DiGiantomasso (631) 878-0636 |
| Independent Group Home Living, Inc. (IGHL) | 221 North Sunrise Service Road Manorville | Two Fridays a month 6pm – 10pm | Ages: 16 years & up Developmentally Disabled | Minimal fee at times | Suffolk County Only Community integrated activities Central pickup for transportation | Tracey DelDuca (631) 878-0636 tdelduca@ighl.org Michelle DiGiantomasso (631) 878-0636 |



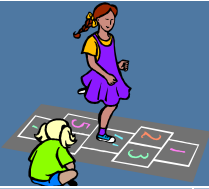
WEEKEND & RECREATION RESPITE PROGRAMS

| AGENCY | LOCATION | SERVICE HOURS | POPULATION SERVED | FEE | COMMENTS | CONTACT PERSON |
|--|--|-----------------------------------|--|-------------------------|---|--|
| Independent Group Home Living, Inc. (IGHL) | 221 North Sunrise Service Road Manorville | 2 trips per year | Ages: 16 years & up Developmentally Disabled | No Fee | Suffolk County Only Overnight travel programs | Tracey DelDuca (631) 878-0636 tdelduca@ighl.org Michelle DiGiantomasso (631) 878-0636 |
| Independent Group Home Living, Inc. (IGHL) | 221 North Sunrise Service Road Manorville | Varies depending on activity | Ages: 16 years & up Developmental Disabled | Cost varies on activity | Suffolk County Only Community integrated activities 1:1 Transportation | Tracey DelDuca (631) 878-0636 tdelduca@ighl.org Michelle DiGiantomasso (631) 878-0636 |
| Independent Group Home Living, Inc. (IGHL) | 221 North Sunrise Service Road Manorville | Varies depending on activity | Ages: 10 years & up Autism & Autism Spectrum Disorder | No Fee | Sports Activities & Fitness Program Four sessions per year (Summer/Fall/Winter/Spring) Lasts approx 3 weeks | Tracey DelDuca (631) 878-0636 tdelduca@ighl.org Michelle DiGiantomasso (631) 878-0636 |
| IRIE | By appointment only | Mon-Sat | Developmentally Disabled Children | Sliding Scale | Therapeutic Horseback Riding Equestrian Related Activities | Joy Rootkowski (631) 871-1916 iriehorses@aol.com |
| Just Kids | 35 Longwood Rd. Middle Island | Saturdays 9am-1pm | Ages: Preschoolers 2-6 years Developmentally Disabled | \$2.00 per session | Integrated community activities Recreational & socialization program | Patricia Brandow (631) 924-0008 x.241 wagswilly@optonline.net |
| Kulanu | 620 Central Avenue Cedarhurst | Tuesdays, Wednesdays | Teens Developmentally Disabled | \$10 per session | Wheelchair accessible. Program has full gym, sensory rooms, offsite activities with community volunteers and professionals | Jonathan Cooper (516) 569-3083 x.135 jonathanc@kulanukids.org |
| Life's WORC | 1501 Franklin Ave. Garden City | Saturdays 11am-4 pm | Ages: 13 years - Adult Mild to Moderate Mental Retardation & Autism | No Fee | Centralized pickups in Nassau & Suffolk Counties: Lynbrook, Merrick, Garden City, Dix Hills | Rosemary Barlone (516) 741-9000 x.253 rbarlone@lifesworc.org |
| Life's WORC | Glen Cove YMCA & Bay Shore YMCA | 2 Saturdays a month 11am - 2pm | Ages 5-12 years Autism Only | No Fee | Nassau & Suffolk Counties 2:5 staff to children ratio and an additional on site supervisor | Kristen Schreck (516) 741-9000 x.355 kschrek@lifesworc.org |



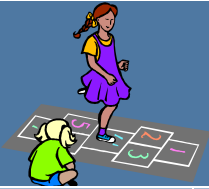
WEEKEND & RECREATION RESPITE PROGRAMS

| AGENCY | LOCATION | SERVICE HOURS | POPULATION SERVED | FEE | COMMENTS | CONTACT PERSON |
|---|--|--|--|-------------------|--|---|
| Long Island Toy Lending Center for Children with Disabilities | Farmingdale Library 116 Merritts Road Farmingdale & Town of Hempstead E. Marina, Point Lookout | Mon.-Fri. 9am-5pm | Ages: infants -15 yrs Developmentally Disabled | Sliding Scale | Nassau & Suffolk Counties Resource Center & Toy Lending Library One weeknight per month (4 hours per night) | Colleen Moseman (516) 889-8287 litoycenr@gmail.com |
| Maryhaven Center of Hope | 455 County Road 101 Yaphank | Saturdays 10am – 2pm | Ages: 10 years & up Developmentally Disabled | No Fee | Suffolk County Only Onsite & community integrated activities No transportation Wheelchair Accessible | Phil Orofino (631) 924-5900 x.195 phillip.orofino@chsli.org |
| Mill Neck Services | 501 So. Broadway Hicksville | Wednesday evenings 6pm-9pm Saturdays 10am-2pm 2x a month | Deaf & Developmentally Disabled | No Fee | Nassau & Suffolk Counties Recreation Café | Loretta Murray (516) 922-3818 deafmns@aol.com |
| Nassau/Suffolk Services for the Autistic, Inc. (NSSA) | 80 Hauppauge Road Commack | Jan.-June, Sept. – Dec. & July & Aug 2 sessions 2 Saturdays a month 10am – 3pm | Ages: 4-21 years Autistic/ Autistic Spectrum | \$20 each session | Nassau & Suffolk Counties | Christen McPherson George Williams (631) 462-0386 gwilliams@nssa.net |
| School for Language and Communication Development (SLCD) | 100 Glen Cove Ave. Glen Cove | Saturdays 10am – 3pm | Ages: 3 to 15 years Children with Autism & Developmental Disabilities | No Fee | Nassau & Suffolk Counties Recreation based and includes music, dance, gym and art | Christine Austin 516-609-2000 x.137 caustin@slcd.org |
| Sid Jacobson Jewish Community Center | 300 Forest Drive East Hills | Saturdays 6pm – 9pm | Ages: 9-21 years Developmentally Disabled & Autistic | No Fee | Nassau & Suffolk Counties Open for 18 Saturday nights during the year | Stacy Denison (516) 484-1545 x175 sdenison@sjjcc.org |



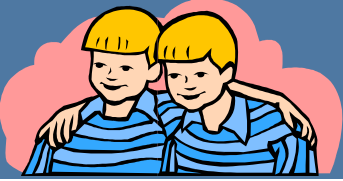
WEEKEND & RECREATION RESPITE PROGRAMS

| AGENCY | LOCATION | SERVICE HOURS | POPULATION SERVED | FEE | COMMENTS | CONTACT PERSON |
|---|--|--|--|---|---|--|
| Special Olympics – Long Island | Different Location Every Year. | One day event 10:30am-2:30pm | Developmentally Disabled Children & Adults | No Fee | Young Athlete Skills Tournament | Rebecca Strickland (631) 254-1465 x4203 Tim Flynn (631) 254 1465 x4202 |
| Special Olympics – Long Island | Jefferson Primary School 253 Oakwood Rd Huntington | 10am – 12pm | Developmentally Disabled Children & Adults | No Fee | Year Round | Rebecca Strickland (631) 254-1465 x4203 Tim Flynn (631) 254 1465 x4202 |
| United Cerebral Palsy of Suffolk County (UCP of Suffolk) | 250 Marcus Blvd. Hauppauge | One per month, 2 nd Thursday "Thursday Club" 3:30pm – 6:30pm | Adults Developmentally Disabled | No Fee | No Transportation | Irene Rielly (631) 232-0011 x.552 irielly@ucp-suffolk.org |
| United Cerebral Palsy of Suffolk County (UCP of Suffolk) | 250 Marcus Blvd. Hauppauge | 10am – 2pm 48 Saturdays a year | Developmentally Disabled | No Fee | Suffolk County Limited transportation Bring own lunch | Keith Jones (631) 232-0011 x.607 kjones@ucp-suffolk.org |
| United Cerebral Palsy of Suffolk County (UCP of Suffolk) | 250 Marcus Blvd. Hauppauge | Saturdays 10:30am – 1:30pm 46 Saturdays Annually | Adults who are medically frail, multihandicapped who need medical monitoring, physical care and assistance | No Fee | Limited transportation provided within 10 mile radius or families can transport. Max of 12 individuals per Saturday Families to provide lunch, diapers, medications, etc | Keith Jones (631) 232-0011 x.607 kjones@ucp-suffolk.org |
| Variety Child Learning Center | 47 Humphrey Dr. Syosset | 16 Sundays – Oct. & Jan. Feb. & June 9:30 – 3:30pm | Ages: 3-10 years Developmentally Disabled Autism Spectrum Also can have non-disabled siblings | \$10 for 1 non-disabled \$15 for 2 or more non disabled sibling per day. | Children bring lunch, snack is provided Peanut free building Some staff bilingual | Rebecca Esquillin (516)921-7171 x. 2104 resquillin@vclc.org |



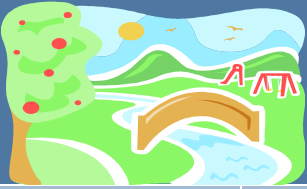
WEEKEND & RECREATION RESPITE PROGRAMS

| AGENCY | LOCATION | SERVICE HOURS | POPULATION SERVED | FEE | COMMENTS | CONTACT PERSON |
|--|---|--|---|--------|---|-------------------------------|
| YAI – National Institute for People with Disabilities (YAI) Independent Living Program | Session Nassau: 96 Willis Ave., Mineola Session Suffolk: 555 Washington Ave. Brentwood | Mon, Tues, or Wed 6:30 pm – 8:30 pm | Ages: 18 & up Developmentally Disabled Autism Spectrum Disorder | No Fee | Closed on holidays Transportation not included Sessions alternate between Nass & Suff Every 24 weeks | Stacy Hagan (631) 967-7109 |



SIBLING SUPPORT

| AGENCY | LOCATION | SERVICE HOURS | POPULATION SERVED | FEE | COMMENTS | CONTACT PERSON |
|---|--|---|---|-----------|---|---|
| Big Brothers- Big Sister of Long Island | 145 Sycamore Ave. Islandia Main Office: 70 Acorn Ave Levittown | Mon, Tues & Fri 9am – 5pm Wed & Thurs 9am – 8:30pm | Ages: 7-14 years Siblings of Developmentally Disabled individuals | No Fee | Nassau & Suffolk Counties Siblings share a weekly outing & activity with a A Big Brother or Big Sister | Josephine Todisco (516) 731-7880 x4869 jtodisco@bbbsli.org |
| Quality Services for the Autism Community (QSAC) | 872 Atlantic Ave Baldwin | Meet first and third Tuesday of the month 7pm – 8:30pm | Parent and sibling support groups for families that have a child or sibling with Autism Spectrum Disorder | No Fee | Nassau & Suffolk Counties | Lisa Veqlia (212) 244-5560 x.2017 lveqlia@qsac.com Charesse Hutcherson (718) 728-8476 x1430 |



TOWN RECREATION

| AGENCY | LOCATION | SERVICE HOURS | POPULATION SERVED | FEE | COMMENTS | CONTACT PERSON |
|--|---|--|---|---|---|---|
| Suffolk County Council Boy Scouts Special Needs Division 7 Scouting Blvd. Medford | Various sites in Suffolk | Days & Evenings Depending on the site | Ages: 6 years & up (boys) Co-ed Ages: 14 years & up Developmentally Disabled | Registration Fee | Suffolk County Only Social & recreational activities that work on fostering life skills, self sufficiency and good citizenship | Lauren Vlachos (631) 924-7000 x 137 lvlachos@bsamail.org |
| Town of Babylon Human & Therapeutic Services, Inc. 200 E. Sunrise Hwy, Lindenhurst | Various schools in the town of Babylon. Town of Babylon Annex & Babylon Bowling Alley | Evenings Mondays, Wednesdays & Fridays | Ages: 7 years & up Developmentally Disabled | Registration Fee \$15 \$20 for Bowling | Transportation provided: Arts & crafts, field trips, bowling, & swimming | Claire McKeon 631-422-7660 Laura Wexelbaum 631-893-1050 |
| Town of Brookhaven Dept. Of Parks, Recreation & Sports & Cultural Resources 1130 Old Town Road, Coram | Various sites in Town of Brookhaven | Evenings & Saturdays | Ages: 15 years & up Developmentally Disabled | Activity Based Fee | Bowling, swimming, dances & other activities | Elaine Gallagher (631) 451-6108 egallagher@brookhaven.org |
| Town of Hempstead Dept. Of Recreation (Anchor) 630 Lido Blvd Lido Beach | Camp Anchor Town Park at Lido Beach | Mon – Fri 9am-3pm 6 week in summer - July & August | Ages: 5 years & up Developmentally Disabled | No Fee | Transportation provided | Maryann Hanson (516) 801-5644 |
| Town of Hempstead Dept. Of Recreation (Anchor) 630 Lido Blvd Lido Beach | School Year Recreation Programs | Mon-Fri Afternoon and evenings 9am – 2:30 Saturdays – Oct. – May | Ages: 5 years & up Developmentally Disabled | No Fee | Transportation provided | Maryann Hanson (516) 801-5644 |
| Town of North Hempstead Dept. Of Parks & Recreation | Clinton G. Martin Park Recreation Center Marcus Ave. & New Hyde Park Rd. New Hyde Park | Sept.- June Saturdays 9:30am-3:30pm July & August – Tues.-Sat. 10am-3pm | Ages: 5 & up Developmentally Disabled | No Fee | Arts & Crafts, swimming, special events, field and summer camp Must live in North Hempstead | Mary Mahaffey (516) 739-3113 mahaffeym@northhemsteadny.gov |



TOWN RECREATION

| AGENCY | LOCATION | SERVICE HOURS | POPULATION SERVED | FEE | COMMENTS | CONTACT PERSON |
|---|---|--|--|---|--|---|
| Town of Huntington Department of Parks & Recreation Town Hall 100 Main Street Huntington | Young Teen Program Maplewood Elementary Summer Camp in Commack | Saturdays Oct – June 10:30am–1:30pm 6 weeks M-F 9am – 2:30pm | Children 9-19 years Ages: 6 - adult Developmentally Disabled | \$75 for resident \$100 for non-resident \$150 for resident \$500 for non-resident | Saturday Recreation Program Summer Camp | Jack Fass (631) 351-3071 jfass@huntingtonny.gov |
| Town of Islip Department of Human Services Division of Therapeutic Recreation | Dance only @ David Sanders Dance 4110 Sunrise Highway Oakdale | Fridays 2 sessions per day Sep – June | Ages: 6-21 years Developmentally Disabled | No Fee | Modern Dance Program Ages 6-13 5-6pm Ages 14-21 6-7pm | Joanne Folber (631) 224-5320 youthbureau@townofislip-ny.gov |
| Town of Oyster Bay Department of Community Services Group Activities Program (GAP) 977 Hicksville Rd., Massapequa | Syosset & Woodbury Community Centers | Oct. - May Evenings & Saturdays Summer day camp | Ages: 5 years & up Developmentally Disabled - | \$100 | Arts & Crafts, sports, dancing, games, bowling, swimming, drama groups 6 week, summer day camp & evening summer program Saturday evening respite 1x a month, field trips | Mary Hurst (516) 797-7948 mhurst@oysterbay-ny.gov |
| Town of Oyster Bay Department of Community Services Group Activities Program (GAP) 977 Hicksville Rd., Massapequa | Syosset & Massapequa Community Centers | Fridays 7pm – 9pm October – May | Ages: 5 – 20 years Autism | No Fee except for field trips | Arts & crafts, dancing, bowling, and other activities Field trips are planned once a month | Mary Hurst (516) 797-7948 mhurst@oysterbay-ny.gov |
| Town of Smithtown Recreation Department 495 Landing Ave. Smithtown, NY 11787 | Various schools in Smithtown | Evenings | Ages: 16 years & up Developmentally Disabled | No Fee | Socials, arts & crafts, field trips, bowling & swimming | Sue Cappelmann (631) 360-7646 suecapp@optonline.net |



VOUCHER REIMBURSEMENT PROGRAM

| AGENCY | LOCATION | SERVICE HOURS | POPULATION SERVED | FEE | COMMENTS | CONTACT PERSON |
|---|--|----------------------------|---|--------|---|--|
| Association for Children with Down Syndrome (ACDS) | 665 North New Bridge Road Levittown | Mon.-Fri. 8:30am-4:30pm | All Ages Developmentally Disabled | No Fee | Nassau & Suffolk Counties Reimbursement for respite and other goods & services which cannot be funded through other resources | Erica Lepurage (516) 605-2391 x102 elepurage@acds.org |
| Association for the Help of Retarded Children of Nassau County (AHRC Nassau) (Citizen's Inc.) | 115 E. Bethpage Road Plainview | 9am-5pm | Developmentally Disabled Children & Adults | No Fee | Nassau County Only Reimbursement for respite & other services & goods which cannot be funded through other resources | Mindy Goodman (516) 293-2016 x.5607 mgoodman@ahrc.org |
| Association for the Help of Retarded Children of Suffolk County (AHRC Suffolk) | 2900 Veterans Memorial Hwy Bohemia | 8:30am- 4:30pm | Developmentally Disabled Children & Adults | No Fee | Suffolk County Only Payers of last resort for any goods & services | Betsy Honeycutt (631) 585-0100 x. 579 bhoneycutt@suffahrc.org |
| Angela's House | PO Box 5052 Hauppauge | 9am-4pm | Medically frail, chronically ill, technology dependent and developmentally disabled | No Fee | Nassau & Suffolk Counties Reimbursement for services & goods which cannot be funded through other resources | Barbara Squillacioti (631) 328-1069 bsquillacioti@angelashouse.org |
| East End Disability Associates, Inc. (EEDA) | 107 Roanoke Avenue Riverhead | 9am – 5pm | All Ages Medically Fragile & Developmentally Disabled | No Fee | Eastern Suffolk Only Reimbursement for services & supplies that cannot be funded through any other sources | Joan Lucarelli (631) 369-7345 x.125 joan1@eed-a.org |
| Family Residences & Essential Enterprises, Inc. (FREE) | 191 Sweet Hollow Rd Old Bethpage | Mon.-Fri. 9am-5pm | All Ages Developmental Disabilities & Autism Spectrum Disorder | No Fee | Nassau County Reimbursement program for families of DD children for non-Medicaid reimbursable expenses and extraordinary expenses due to the persons disability | Kelly Lang (631) 273-1300 x. 3557 Nicky Faranda (631) 273-1300 x3539 |



VOUCHER REIMBURSEMENT PROGRAM

| AGENCY | LOCATION | SERVICE HOURS | POPULATION SERVED | FEE | COMMENTS | CONTACT PERSON |
|--|---|---|---|--------|---|--|
| Head Injury Association (HIA) | 300 Kennedy Drive Hauppauge | Mon.-Fri. 9am-5pm | All Ages Traumatic Brain Injury & Developmentally Disabled | No Fee | TBI support groups, Non-Medicaid Service Coordination, Referral & Resource, Advocacy Support & Reimbursement | Kristi Marcus (631) 543-2245 x 7485 kmarcus@headinjuryassoc.org |
| Jewish Community Center of the Greater Five Towns | 207 Grove Avenue Cedarhurst | Mon.-Thurs. 8am – 4pm | All Ages Developmentally Disabled | No Fee | Wheelchair Accessible Hebrew & Russian speakers available | Yael Schochat (516) 569-6733x.211 |
| Labor & Industry for Education, Inc. (LIFE) | 112 Spruce Street Cedarhurst | Monday – Thursday 9am – 5pm Friday 9am – 1pm | All Ages Developmentally Disabled | No Fee | Nassau & Suffolk Counties Reimbursement for goods and services which cannot be funded through other resources. | Julie Eden 516-374-4564 x.1010 jeden@lifetech.org |
| Long Island Developmental Disabilities Service Office (LIDDSO) | 415A Oser Ave. Hauppauge | 8am- 4:30pm | All Ages Developmentally Disabled | No Fee | Nassau & Suffolk Counties Reimbursement for services/goods which cannot be funded through any other resources | Mary Nicolls (631) 416-3923 Mary.Rabbito-Nicolls@opwdd.ny.gov |
| SCO Family of Services | 164 3 rd Avenue Brentwood | 9am-5pm | Children & Adults Developmentally Disabled | No Fee | Nassau & Suffolk Counties Reimbursement for goods and services | Peggy Telesca (631) 273-2773 x. 203 patelesca@sco.org Sherry Lewinter (631) 273-2773 X110 |
| United Cerebral Palsy of Suffolk County (UCP of Suffolk) | 250 Marcus Blvd. Hauppauge | Mon. – Fri. 8:30am – 4:30pm | Children & Adults Developmentally Disabled | No Fee | Suffolk County Only Reimbursement for goods and services | Michele Kuhl (631) 232-0011 x483 |
| United Cerebral Palsy of Nassau County (UCP of Nassau) | 380 Washington Ave Roosevelt | Mon. – Fri. 9am – 5pm | Children & Adults Developmentally Disabled | No Fee | Nassau County Only Reimbursement for goods and services | Elisa Rosen (516) 378-2000 x416 |



NON-MEDICAID SERVICE COORDINATION

| AGENCY | LOCATION | SERVICE HOURS | POPULATION SERVED | FEE | COMMENTS | CONTACT PERSON |
|--|---|-----------------------------|--|-----------|---|---|
| A-1 Universal Care, Inc. | 400 Post Avenue Suite 302 Westbury | Mon. – Fri. 9am – 5pm | Ages: 5-60 years Developmentally Disabled | No Fee | Nassau County Only Short term service coordination for individuals with Developmental Disabilities who are not Medicaid eligible | Donna Harris (516) 338-8777 dharris@a1universalcare.org |
| Adults & Children with Learning Disabilities (ACLD) | 807 South Oyster Bay Road Bethpage | Mon.-Fri. 9am-5pm | Adults & Children Developmentally Disabled | No Fee | Nassau & Suffolk Counties Short term service coordination for individuals with DD who are not Medicaid eligible | Carla Oswald (516) 822-0028 x652 oswaldc@aclid.org |
| Angela's House | P.O. Box 5052 Hauppauge | Mon.-Fri. 9am-4pm | Developmentally Disabled children – medically frail, technology dependent & chronically ill | No Fee | Nassau & Suffolk Counties Also does Crisis NMSC | Colleen Kunkel (631) 761-0128 ahcolleen@aol.com |
| Bellport-Area Community Action Committee (BACAC) | 471 Atlantic Avenue Bellport | Mon.-Fri. 8:30am-5pm | Ages: 3 years & up Developmentally Disabled | No Fee | Primarily minority families in South Country School District/North, Bellport Community | Yolanda Lucas (631) 286-3107 |
| Center for Family Support, Inc. | 110 Jericho Tpke, Suite 103 Floral Park | Mon. – Fri. Varied hours | Ages: 3 years & up Developmentally Disabled individuals without Medicaid | No Fee | Nassau & Suffolk Counties | Sarah Hindman (516) 292-3000 x. 427 shindman@cfsny.org |
| Center for Rapid Recovery (CRR) | 312 Greenwich St Hempstead | Mon.-Fri. 9am-5pm | All ages Developmentally Disabled | No Fee | Nassau & Suffolk Counties Short Term service coordination for DD individuals who do not have Medicaid Spanish Speakers Available | Doris Yeboah (516) 292-6449 x. 121 dyeboah@rapidrecovery.org |



NON-MEDICAID SERVICE COORDINATION

| AGENCY | LOCATION | SERVICE HOURS | POPULATION SERVED | FEE | COMMENTS | CONTACT PERSON |
|---|---|---|---|---------|---|---|
| Cody Center for Autism and Developmentally Disabilities | S.U.N.Y. Stony Brook 177 Putnam Hall Room 100A South Campus Stony Brook | Mon.-Fri. 9am – 5pm | Families of children, adolescents and adults with developmental disorders | No Fee | Suffolk County Only | Giuseppa Licata 631-444-7307 giuseppa.licata@stonybrookmedicine.edu |
| East End Disability Association (EEDA) | 107 Roanoke Avenue Riverhead | Mon.-Fri. 9am – 5pm | Children & Adults Developmentally Disabled | No Fee | Serves Individuals East of William Floyd Parkway | Michaleen Anderson (631) 369-7345 x115 |
| Economic Opportunity Council (EOC) | 320 Carlton Avenue Suite 7800 Central Islip | Mon.-Fri. 9am – 5pm | Children & Adults Developmentally Disabled | No Fee | Suffolk & Nassau Counties | Simone Holder (631) 666-6471 x.602 sholder@eoc-suffolk.com |
| Head Injury Association (HIA) | 300 Kennedy Drive Hauppauge | Mon.-Fri. 9am – 5pm | All ages, TBI & DD | No Fee | Nassau & Suffolk Counties Short term case management | Kristi Marcus (631) 543-2245 x 7485 kmarcus@headinjuryassoc.org |
| Hispanic Counseling Center | 344 Fulton Ave. Hempstead, NY 11550 | Mon.-Fri. 9am – 5pm | Ages: 4 years – Adults, Hispanic Developmentally Disabled population | No Fee. | Nassau & Western Suffolk Counties | Janet Torres (516) 538-2613 mschcc@aol.com |
| Innovative Resources for Independence (IRI) | 191 Bethpage-Sweet Hollow Road Old Bethpage | Mon.-Fri. 9am – 5pm | Children & Adults Developmentally Disabled | No Fee | Nassau County | Tim Coleman (646) 294-0544 tcoleman@in-res.org Yvellisse Rosa (646) 533-8254 yrosa@in-res.org |
| Kulanu | 620 Central Avenue Cedarhurst | Mon. – Thurs. 9am – 6pm Fridays 9am – 2pm Additional hours by appointment | Individuals with Developmental Disabilities, Autism Spectrum Disorders | No Fee | Nassau County | Amy Eisenberg (516) 569-3083 x.138 amy@kulanukids.org |



NON-MEDICAID SERVICE COORDINATION

| AGENCY | LOCATION | SERVICE HOURS | POPULATION SERVED | FEE | COMMENTS | CONTACT PERSON |
|--|--|------------------------------|---|-----------|--|--|
| Long Island Advocacy Center | 490 Wheeler Road Hauppauge | Mon.-Fri. 9am – 5pm | Children & Adults With Developmental Disabilities and their families | No Fee | Nassau & Suffolk | Carolyn Roth (631) 234-0467 x. 18 croth@theliac.org |
| Mill Neck Services for Deaf Adults | P.O. Box 193 Frost Mill Road Mill Neck | Mon.-Fri. 8am – 4pm | Deaf, Developmentally Disabled adults | No Fee | Nassau & Suffolk Counties | Loretta Murray (516) 922-3818 deafmns@aol.com |
| SCO Family of Services | 164 3 rd Avenue Brentwood | Mon.-Fri. 9am – 5pm | Children & Adults Developmentally Disabled | No Fee | Nassau & Western Suffolk Counties Short term service coordination for individuals with Development Disabilities who are not Medicaid eligible | Sherry LeWinter (631) 273-2773 x. 110 slewinter@sco.org |
| United Cerebral Palsy Association of Greater Suffolk County, Inc. (UCP of Suffolk) | 250 Marcus Blvd. Hauppauge | Mon-Thurs 8:30am- 7pm | Children & Adults Developmental Disabilities | No Fee | Suffolk County Only Service Coordination and Support | Michele Kuhl (631) 232-0011 x416 |
| YAI – National Institute for People with Disabilities (YAI) | 555 Washington Ave, Suite 1 Brentwood | Mon-Fri 8:30 am – 5 pm | Children & Adults Autism | No fee | Nassau & Suffolk Counties Short term service coordination | Melissa White (631) 967-7106 Melissa.white@yai.org Simja Bezalel (516) 742-9549 |